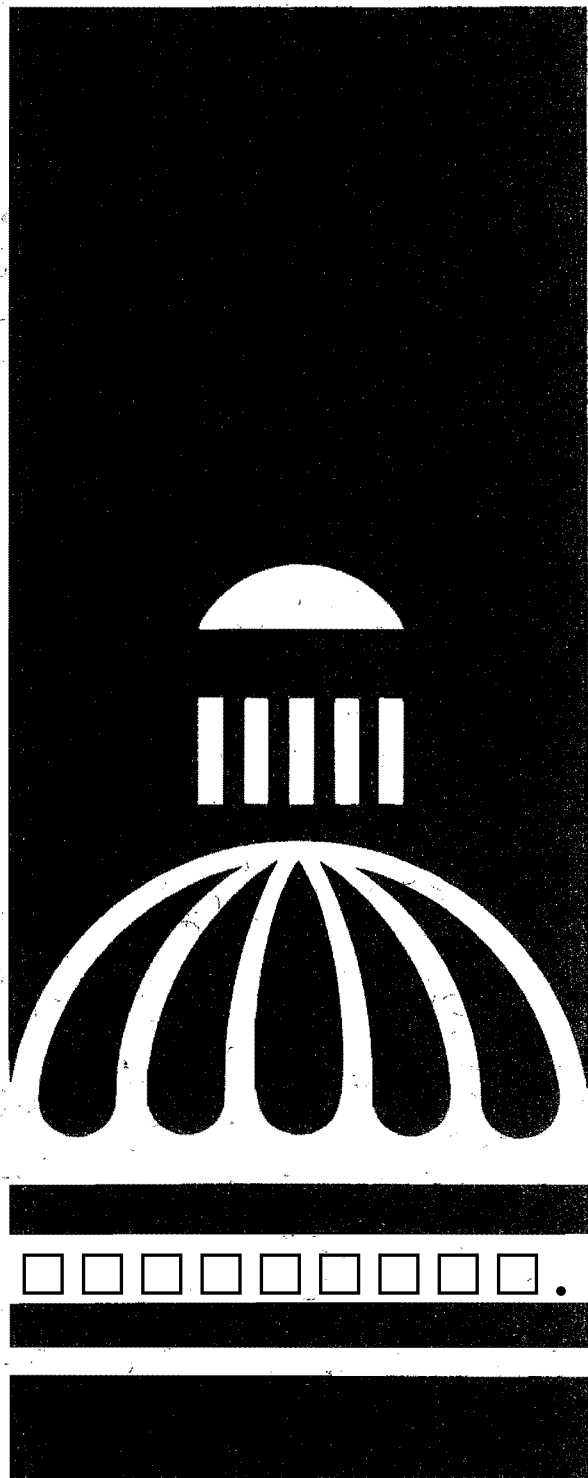


M. 1ssour1

# Gaming COmmission ,.

. 1996 Annual Report  
tn the General Assembly



Robert L. Wolfson,  
*Chairman*

Robert M. Clayton II,  
*Vice Chairman*

Dr. Jenice Prather,  
*Secretary*

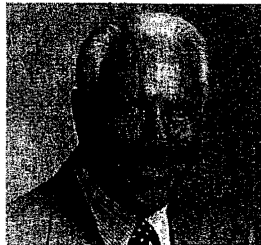
William J. Quinn

Avis Tucker

# TABLE OF CONTENTS

THE COMMISSIONERS .....	1
INTRODUCTION .....	2
STATUTORY PROVISIONS .....	3
<i>Contributions to Education</i> .....	8
ORGANIZATIONAL STRUCTURE-;.....	10
<i>Executive Director</i> .....	10
.....	
Audit.....	11
Bingo.....	11
Corporate Securities and Finance.....	12
Enforcement .....	12
Legal and Legislative Affairs .....	13
OCCUPATIONAL LICENSE DENIALS .....	15
VOLUNTARY EXCLUSIONS.....	16
TIMELINE OF RIVERBOAT GAMING IN MISSOURI .....	17
OUTLINE OF A BACKGROUND INVESTIGATION .....	20
COMPLIANCE AUDIT OBJECTIVES FOR LICENSEES .....	22
SEMI-ANNUAL FINANCIAL AUDIT OBJECTIVES FOR LICENSEES.....	23
GAMING OPERATOR TAX SUMMARIES .....	APPENDIX A
SUMMARY OF NATIONAL GAMING POLICIES .....	APPENDIX B
GAMING COMMISSION FISCAL REPORT.....	APPENDIX C
GAMING OPERATOR SUMMARIES.....	APPENDIX D

# The Commissioners



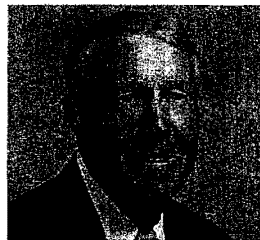
*Robert L. Wolfson, Chairman*

Robert L. Wolfson is Chairman of the Board for Wolfson Capital Venture, serves on the Mark Twain Chairman's Board, is a member of the Board of Trustees for Brandeis University and is on the Board of Trustees of Jewish Hospital in St. Louis. He is the co-founder of the St. Louis Blues of the National Hockey League and served as Vice-President and Treasurer of the St. Louis Blues. Mr. Wolfson has a long history as a successful businessman, having owned and managed many successful retail and commercial ventures. Additionally, Mr. Wolfson is the recipient of many awards from civic organizations and is well known for his philanthropic endeavors.



*Robert M. Clayton II, Vice-Chairman*

Mr. Clayton is a senior partner of Clayton & Clayton law firm. He has served on the Board of Directors of Roosevelt Bank and has also served as a member of the Compensation and Stock Option Committee. He serves on the Mark Twain Home Board. Mr. Clayton is former President of the Missouri Bar and is the Treasurer of the Missouri Bar Plan Mutual Insurance Company, a member of its Executive Committee and Chairman of the Bar's Underwriting and Finance Committee. Mr. Clayton also serves as a member and Director of the Bar Plan Foundation.



*William J. Quinn*

Mr. Quinn is a retired, 23 year veteran of the FBI where he served as supervisor of the agency's Organized Crime and Racketeering unit in Kansas City. He also served as National Chairman of the Foner Agents of the FBI Foundation. He is a veteran of the United States Navy and holds a BBA degree from Northeastern University in Boston, Massachusetts. In addition, Mr. Quinn has owned and operated a private security company.



*Dr. Jenice Prather, Secretary*

Dr. Jenice J. Prather is a CPA and accounting professor at the University of Missouri-Columbia. She has published over twenty articles in national and international academic accounting journals. She has received numerous honors and awards for her research and teaching including a two year Research Associateship from Washington University and a KPMG Peat Marwick International Accounting Research Fellowship. She holds leadership positions in the American Accounting Association, the National Association of Black Accountants, the American Institute of CPAs, the Institute of Management Accountants and the Missouri Society of CPAs. She was on the Price Waterhouse, National Advisory Board and currently is on the MIZZOU Credit Union and the Board of Trustees of Second Missionary Baptist Church.



*Avis Tucker*

Avis Tucker is the President of Star-Journal Publishing Co. and serves as Editor and Publisher of the Daily Star-Journal in Warrensburg, Missouri. She also serves as President of Johnson County Broadcasters, Inc. Additionally Mrs. Tucker serves on the Missouri Commission on the Organization of the Judicial Department; the Whiteman Air Force Base Community Council; the Warrensburg Chamber of Commerce; and the Children's Mercy Hospital Public Affairs Committee. Mrs. Tucker has received number of awards for her professional accomplishments and her public service work, most recently the Chancellor's Award from UMKC.

## Introduction

The Missouri Gaming Commission was established in 1993 to regulate riverboat gambling in Missouri. In addition, the Commission assumed the responsibility for regulating charitable bingo games on July 1, 1994.

The five member Commission is charged with maintaining public confidence in legal gambling and ensuring that no criminal elements are allowed to infiltrate licensed gaming operations. It is important that the Commission do its job well so that public confidence in the gaming industry is established, thereby allowing the industry to reach its goals of economic development, job creation and the promotion of Missouri as a major tourist attraction.

As a state regulatory agency, the Commission and its staff hold themselves to the highest ethical and professional standards and strive to conduct all business in a manner which maintains the public trust. Pursuant to statute, a strict Code of Ethics has been adopted prohibiting conflicts of interest and ex parte communications.

The key regulatory responsibilities of the Commission are as follows:

- to conduct thorough background investigations on all key persons involved in the gaming operation including substantial owners, management personnel, key operational employees and suppliers;
- > to thoroughly investigate the finances of applicants and their key persons to determine if they have the financial resources and responsibility to meet their proposed obligations;
- to screen all occupational licensees including dealers, slot attendants, food and beverage servers, security and surveillance personnel and all other employees who have access to the gaming area and investigate the background of each to ensure that the personnel operating the casino are of sufficient character to maintain the integrity of Missouri gaming;
- to photograph and fingerprint each employee so as to maintain a complete and accurate database of boat personnel;
- to assign appropriate staff to each gaming operation to be present at all times when gaming is conducted. Enforcement agents are charged with

ensuring that gaming is conducted in accordance with the Missouri gaming statute, the rules and regulations of the commission and the operator's own internal controls;

to ensure that the safety of the passengers is guarded, to conduct investigations of suspected wrongdoing and to receive complaints from customers;

- > to review and audit the finances of the gaming operation through the combined work of Commission staff and independent public accounting firms that are retained by the licensee and approved by the Commission; and
- to monitor the financial integrity of gaming operators to ensure that Missouri's financial interests are protected.

Pursuant to statute, the Commission has entered into a Memorandum of Understanding with the Missouri State Highway Patrol to perform background investigations and provide enforcement personnel on the boats. Under the terms of this agreement, the Patrol also provides enforcement personnel for the Division of Bingo.

The Commission also has a Memorandum of Understanding with the IRS to assist with the financial portion of the background investigation and to provide ongoing expertise with regard to the internal control procedures and the reporting and payment of taxes.

At the end of 1996, ten riverboat casinos were operational at eight different developments in Missouri. Summaries of the operator's financial reports, that are required by the Commission, are contained in *Appendix C*. Harrah's Maryland Heights, Inc. and Players Maryland Heights Corporation are in the process of being investigated.

The Commission is also responsible for approximately 870 bingo licensees and has successfully implemented the new requirement of licensing hall providers. In addition, the commission has successfully executed the difficult task of implementing the new supplier-based bingo tax that took effect January 1, 1995.

## The Effect of the \$500 Loss Limit on Competitiveness

For the past two years the commission has reported that the \$500 loss limit imposed by statute places Missouri riverboat gaming operations at a competitive disadvantage as opposed to similar operations in the adjoining states of Illinois and Iowa. We opined at that time that the \$500 loss limit contributes to a large decrease in state revenue.

The commission's comments in prior years have been tempered by our knowledge that the riverboat gaming industry in Missouri was in its formative years, and that little data was available to study. After more than two years of Missouri operating history, there is now adequate data from Missouri and its adjoining competitive states to expand our comments on the loss limit, and state our findings with more precision.

### *Negative Impact on Customer Satisfaction*

The most frequent complaints to Commission staff and regulatory personnel in their contacts with the public are those dealing with the loss limit and the boarding restrictions. The restriction on boarding is a method to enforce the loss limit.

In addition, the loss limit continues to be difficult to enforce. Although the commission uses its best efforts to enforce the limit, the customer's desire to circumvent it consumes a tremendous amount of manpower. Enforcement agents spend a significant amount of time dealing with violations and customer disputes. Gaming boat sergeants regularly testify that their most difficult problem was enforcing the \$500 loss limit.

### *The Loss Limit and the Problem Gambler*

The loss limit has been described as a measure intended to deal with problem gaming. However, the success of the loss limit in addressing the problem of compulsive gambling remains undetermined.

The primary argument for the \$500 loss limit is that it helps deter the problem gambler. If the loss limit controlled the behavior of the problem gambler, it would be a laudable requirement.

Mental health professionals have told the commission that, left untreated, the problem gambler will find a way to gamble. Whether it is by reboarding another cruise, using some other person's loss limit card, by crossing the river into another jurisdiction where there is no loss limit, or gambling illegally, the problem gambler will find a way to exercise the compulsion.

The commission, in relying on the treatment professionals, has focused its battle against problem gambling on education, prevention and treatment. Missouri has been one of the most aggressive states in combating problem gambling. Missouri is the first jurisdiction to create a system whereby problem gamblers can exclude themselves from casinos under threat of arrest for trespassing. In addition, the commission has required operators to adopt programs to educate problem gamblers and has arranged funding for the recruitment and training of treatment counselors who must be certified by the Missouri department of mental health.

Missouri has been one of the most aggressive states in combating problem gambling. Missouri is the first jurisdiction to create a system whereby problem gamblers can exclude themselves from casinos under threat of arrest for trespassing.

### *The Loss Limit and the Typical Collateral*

While treatment professionals tell the commission that loss limits do not inhibit the compulsive gambler, Wall Street analysts who study the industry report that the loss limit has a negative impact on the normal consumer looking

for an entertainment experience.<sup>1</sup> Gaming is an entertainment industry. In the entertainment industry, the consumers demand a product that they can enjoy during their leisure time on their own terms.

In Missouri, there are consumers that indicate they dislike the product which they are being offered. Many of these consumers will go out of their way, even travel to another state, to find a product that is more user friendly. A cursory survey of the license plates in the parking lot of the *Casino Queen* in East St. Louis, Illinois, adequately demonstrates this point.

Many Missouri gaming customers complain that the loss limit is inconvenient, intrusive and that it detracts from the entertainment experience they seek at Missouri riverboats. To have to "account" for ones spending during what is supposed to be a leisure activity strikes many as a personal encroachment. The fact that this requirement is imposed and enforced by the government further aggravates this perception.

Many Missouri consumers react to this restriction by taking their leisure time and tax dollars across the border to Illinois, Iowa, or Kansas, where there are no limits. Furthermore, it is apparent that the loss limit severely restricts Missouri riverboat operators from drawing tourist customers from other states. Consumers' choice as to how to spend their discretionary leisure dollars is evident in the competitive gaming arena.

The Missouri gaming law was adopted by the people for its potential to generate economic development, its ability to raise needed revenue for education and because it is a leisure activity that many want to pursue. The loss limit detracts from all of these goals. While Missouri is currently the beneficiary of a significant amount of capital investment and new job creation, the continuing negative impact of the loss limit renders our economic future in this area uncertain. Because of the loss limit, Missouri riverboat operators are less competitive, the state is losing money to its neighboring states, there is a reduction in the number of available jobs and the number of riverboats that can successfully operate in Missouri is restricted.

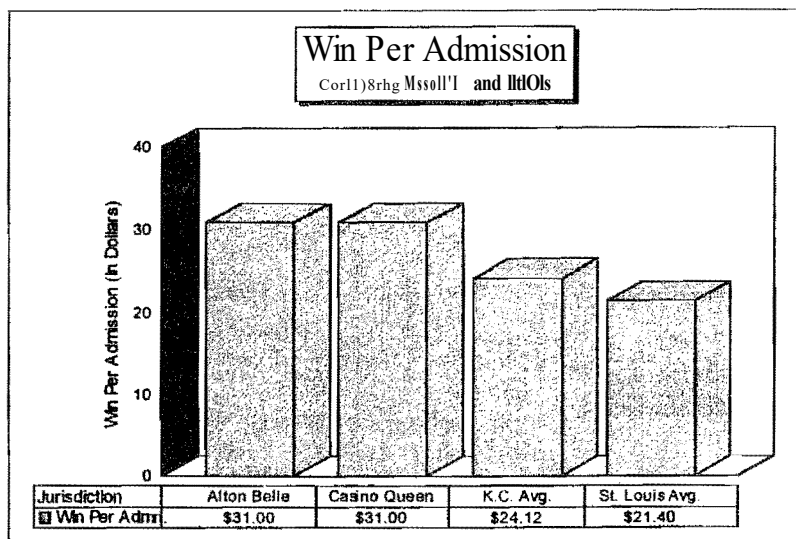
Tax revenues from gaming have benefited education. While tax revenues from gaming are still growing, after only two years Missouri has seen

## How does the Loss Limit Work?

Pursuant to § 313.805, RSMo. the commission is required to regulate the wagering structure to include a maximum loss of five hundred dollars per individual player per gambling excursion. In order to enforce this provision the commission requires the following procedure:

1. In order to board an excursion gambling boat a customer must stand in line to obtain a purchase authorization coupon (scrip). This scrip must be signed by the customer in the presence of a licensed riverboat employee.
2. After the customer receives the scrip he/she must get in another line to board the riverboat. The scrip also serves as the customer's boarding pass.
3. The scrip, which is time and date stamped, must be printed with boxes of denominations, of which the total of all boxes shall not exceed \$500. These boxes shall be canceled by permanent black marker at the time the patron presents the scrip in the riverboat casino. If the scrip is not signed at the time of presentation, or the date and time are not valid, the scrip shall be confiscated from the customer. If the scrip is valid and there are sufficient available boxes, the cashier shall cancel the appropriate number of boxes with a permanent black marker and complete the transaction.
4. In a situation where a customer wishes to buy chips at a table, the procedure is the same except that the dealer stops the game to execute the transaction. On many occasions the use of the scrip to convert cash to chips will slow up the game. This is another example of customer dissatisfaction arising out of the process.

<sup>1</sup> Transcript, Missouri gaming commission meeting, November 25, 1996, pages 8, 11 and 16-17 (Bruce Turner, *Salomon Brothen*); pages 44-46 (Joe Coccimiglio, *Prudential Securities*); pages 57-58, (Tom Ryan, *Bankers Trust*); pages 65-68, (Larry Klatzcin, *Donaldson, Lufkin & Jenrette*); pages 84-90, (Richard Byrne, *Merrill Lynch*);



those revenues fall short of predictions. Analysts from Wall Street tell the commission that we are exporting our tax dollars to other states. In a recent commission meeting regarding market size, a well respected gaming analyst opined that while Missouri supplies 73% of the gaming market in the St. Louis area it captures only 50% of the revenue.<sup>2</sup>

Finally, the gaming experience of consumers who do visit Missouri gaming operators is less desirable than the experience offered by competitive states. Missouri is offering a more cumbersome and less enjoyable product. The commission believes that the gaming policy for Missouri should retain the Missouri dollars in Missouri and attract dollars from other states. Our current policy has the exact opposite result.

## The Costs of Competitive Inferiority

Limiting the ability of Missouri operators to offer a competitive entertainment product has direct economic costs which are easily illustrated. Missouri gaming riverboats are larger, more luxurious and offer more non-gaming amenities<sup>3</sup> than competitors in neighboring states. Yet they fail to compete in economic terms, even though the bulk of the population seeking the entertainment product lives in Missouri.

For example, the *Casino Queen* in East St. Louis, Illinois and the *Alton Belle* in Alton, Illinois combined have less capital investment than *St. Charles Riverfront Station*, which has consistently expanded and reinvested since it opened in May, 1994. In addition, these Illinois gaming facilities consist primarily of parking facilities and the gaming casino. They offer no non-gaming amenities other than limited restaurant facilities.

In spite of these negative competitive factors, the two Illinois facilities regularly outperform SCRS in spending per customer. Similarly, Illinois riverboats in the St. Louis area fare significantly better in gaming revenue per square foot, gaming revenue per position and admissions per square foot. One must question why Missouri residents will drive a longer distance to an inferior facility to spend their entertainment dollar. The answer is to spend their money on the product which they consider superior.

One must question why Missouri residents will drive a longer distance to an inferior facility to spend their entertainment dollar. The answer is to spend their money on the product which they consider superior.

pages 104-106, (John Maxwell, Standard & Poor's) and pages 115-118, (Steve Schneider, Stifel Nicolaus). See also, Minutes of Missouri gaming commission meeting, May 24, 1995.

<sup>1</sup> Missouri Gaming Commission minutes, November 25, 1996, page 27 quoting Jason Ader, Bear Stearns gaming analyst

<sup>3</sup> Examples of some of the non-gaming amenities included in Missouri projects include themed restaurants, movie theaters, hotels, meeting space, retail shopping, child care centers, micro breweries, an 18th century railroad car restored to its original luxury, fountain displays and theaters for live entertainment

## *The Problem is Clear - How does Missouri Address the Problem?*

Missouri statutes require the commission to report annually to the Governor and the General Assembly on the competitive state of the gaming industry in Missouri. For two years, the commission has advised the General Assembly that we believe that there could be a problem with the structure of the gaming industry, but that the data is incomplete. However, we now find the data to be clear and compelling. A problem exists in the Missouri gaming industry -- the gaming product is not competitive with our neighboring states. This will create negative economic results and lower tax revenues.

Due to navigational safety constraints, most Missouri riverboats do not cruise. It has been suggested by gaming analysts; and by legislation filed in prior years that the elimination of the boarding time restrictions will help Missouri gaming operators economically and be more consumer friendly. The commission believes that the current boarding time restrictions are detrimental to the consumer, and make little sense since the riverboats are not leaving the dock. They are an artificial barrier to entry and participation. Yet the boarding times are essential to enforcing the loss limit. A change in the statutes which

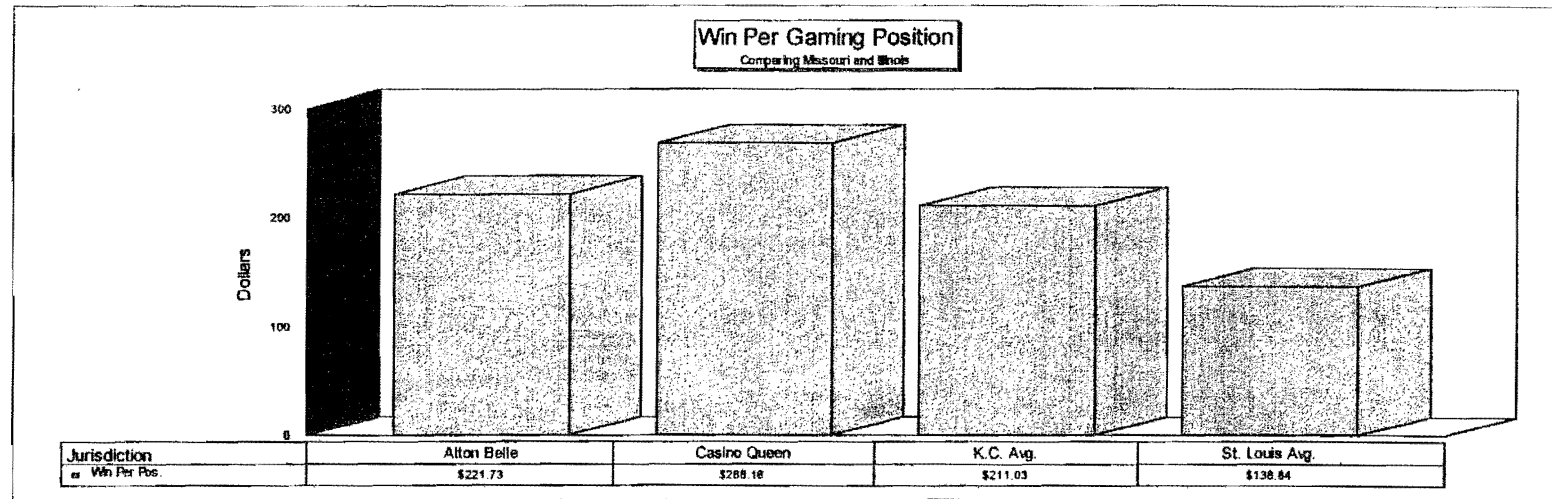
eliminates the boarding times but maintains the loss limit would make the enforcement of the loss limit impossible.

## *Findings*

Current Missouri statutes are not competitive with our adjoining states. Consequently, Missouri is at a competitive disadvantage. Repealing the loss limit would make the Missouri operators more competitive. Without this change, the Missouri gaming industry will continue to be at a competitive disadvantage, and over time, will decline rather than prosper.

## *Conclusion*

Section 313.837, RSMo, requires the commission to report annually to the general assembly on the effects of the loss limit on the competitiveness of the gaming industry in Missouri. The findings above are intended to satisfy this statutory mandate. The enactment of any changes in policy as a result of these findings are obviously the purview of the General Assembly and the Governor.





## Effect of Tax Rate on Competitiveness

The Missouri tax rate currently mirrors that of its principle competitor, the State of Illinois. The Missouri/Illinois tax rate consists of a 20% base tax on adjusted gross receipts (AGR). In Missouri, 10% of that tax (or 2% of AGR) is a local tax, imposed by state statute. The funds collected from this local tax are allocated to the home dock city or county for services necessary for the safety of the public visiting the excursion gambling boat. The remaining tax on AGR (18% of gross receipts) is placed in the "Gaming Proceeds for Education Fund" and may be spent only for public elementary, secondary and higher education.

Iowa has a graduated tax that caps out at 200% for adjusted gross receipts over \$3 million. Because the graduated rate reaches its cap at the relatively low ceiling of \$3 million, Iowa's effective tax rate is not significantly different from that of Missouri and Illinois.

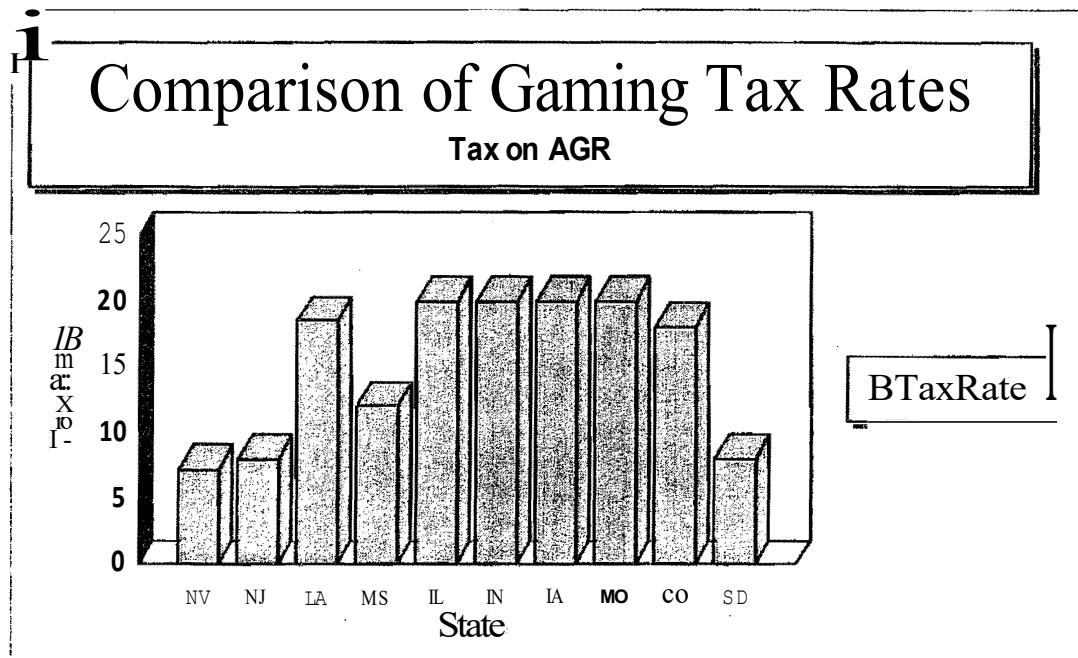
Licensees are also responsible for a \$2 admission fee for each person who participates in a gaming excursion. One dollar of this fee is remitted to the home dock city or county. The remaining dollar is used to fund the regulatory activities of the Commission. No general revenue is used for any activity of the Commission. In addition to the \$2 admission fee, the gaming boat is billed monthly for the full cost of the enforcement agents assigned to the boat. Either through fees or direct billing, the gaming operators pay for the full cost of their own regulation.

The State of Mississippi assesses a tax of 12% on AGR. Unlike Illinois, who is limited to licensing 10 gaming operations, Mississippi has not limited the number of casinos licensed, but has licensed all applicants that have been found suitable. The Missouri law does not specifically limit the number of licenses that may be issued, but places this responsibility in the hands of the Commission through a "best interests of Missouri" standard.

The state of Kansas has recently allowed casinos operated by native American Indians. These casinos are not taxed.

For your future reference, a table is contained in Appendix B setting forth the tax rate in each gaming jurisdiction and the regulatory restrictions that are imposed. The chart below is a generalization of the tax rates in the various gaming jurisdictions. Because of the subtleties of each state's tax law, it is difficult to precisely chart the rates. For a definitive explanation of the tax rates, refer to the aforementioned chart in Appendix B.

The Commission does not feel that the 200% tax rate currently places our licensees at a competitive disadvantage. The commission will continue to monitor the performance of all licensees and report developments as they occur.



# Missouri Gaming Commission Contributions to Education

## Fiscal Year 1995

Gaming Proceeds for Education	\$56,616,282.04
Bingo Tax Proceeds for Education	<u>\$ 6,253,703.96</u>
<i>FY 95 Tax Revenue from Gaming</i>	<i>\$62,869,986.00</i>

**Fiscal Year 1996**

Gaming Proceeds for Education	\$99♦730,320.67
Bingo Tax Proceeds for Education	<u>\$ 4,684,178.52</u>
<i>FY '96 Tax Revenue from Gaming</i>	<u><i>\$104.414.499.19</i></u>
<b><i>Total Tax Revenue from Gaming</i></b>	<b><i>\$167,284,485.19</i></b>

# Does the Gambling Morality Really Go for Fund Education?..

This may be the question most frequently asked of public officials: "Does the simple answer to the question 'Does it work?' lie in the hands of the legislature?" Pursuant to a constitutional amendment passed by the General Assembly as S.B. 20 in 1992 and approved by the voters, in a subsequent general election, all state tax money derived from the proceeds of gambling is spent on education.

The text of this constitutional provision, contained in Article III, Section 39(d), reads as follows:

- All state revenues derived from the conduct of activities as are now provided by law or otherwise provided bylaw on the effective date of this section shall be appropriated beginning January 1, 1993, solely for the first six or elementary, secondary and higher education; nor shall (not be included within the definition of "total state revenues" in section 17 of article X of this constitution.

The tax revenues derived, finally, the proceeds of gambling, for example, are estimated to be \$155 million per annum. In addition to the traditional state general revenue fund, for public schools, has increased every year since the revenue bond act was enacted. The total state budget for education, which represents 19.1% of the average local school budget, is \$2.965 billion; the Illinois State Board of Education not replace the primary source of public school funds. The funds derived from the Illinois State Board of Education, the State of Illinois, the School District Bond Fund, for maintenance and capital expenditures for public colleges and universities and to supplement the school fund.

for an entertainment experience.<sup>1</sup> Gaming is an entertainment industry. In the entertainment industry, the consumers demand a product that they can enjoy during their leisure time on their own terms.

In Missouri, there are consumers that indicate they dislike the product which they are being offered. Many of these consumers will go out of their way, even travel to another state, to find a product that is more user friendly. A cursory survey of the license plates in the parking lot of the *Casino Queen* in East St. Louis, Illinois, adequately demonstrates this point.

Many Missouri gaming customers complain that the loss limit is inconvenient, intrusive and that it detracts from the entertainment experience they seek at Missouri riverboats. To have to "account" for ones spending during what is supposed to be a leisure activity strikes many as a personal encroachment. The fact that this requirement is imposed and enforced by the government further aggravates this perception.

Many Missouri consumers react to this restriction by taking their leisure time and tax dollars across the border to Illinois, Iowa, or Kansas, where there are no limits. Furthermore, it is apparent that the loss limit severely restricts Missouri riverboat operators from drawing tourist customers from other states. Consumers' choice as to how to spend their discretionary leisure dollars is evident in the competitive gaming arena.

The Missouri gaming law was adopted by the people for its potential to generate economic development, its ability to raise needed revenue for education and because it is a leisure activity that many want to pursue. The loss limit detracts from all of these goals. While Missouri is currently the beneficiary of a significant amount of capital investment and new job creation, the continuing negative impact of the loss limit renders our economic future in this area uncertain. Because of the loss limit, Missouri riverboat operators are less competitive, the state is losing money to its neighboring states, there is a reduction in the number of available jobs and the number of riverboats that can successfully operate in Missouri is restricted.

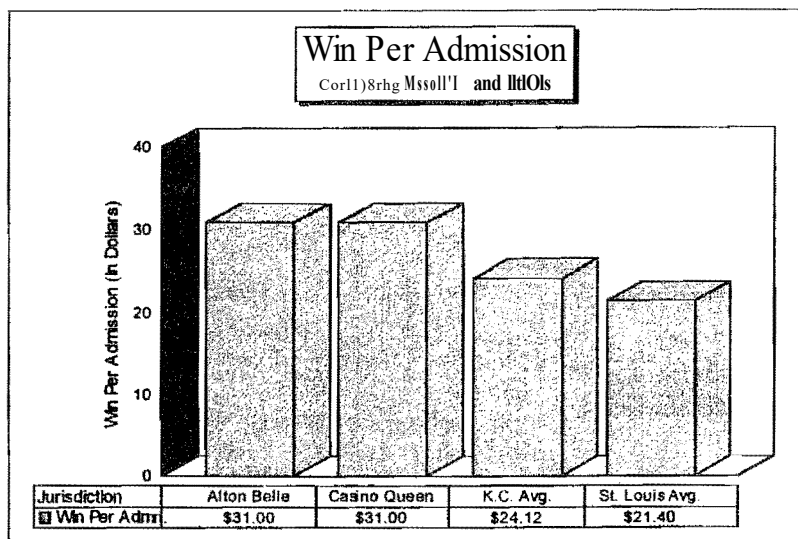
Tax revenues from gaming have benefited education. While tax revenues from gaming are still growing, after only two years Missouri has seen

## How does the Loss Limit Work?

Pursuant to § 313.805, RSMo. the commission is required to regulate the wagering structure to include a maximum loss of five hundred dollars per individual player per gambling excursion. In order to enforce this provision the commission requires the following procedure:

1. In order to board an excursion gambling boat a customer must stand in line to obtain a purchase authorization coupon (scrip). This scrip must be signed by the customer in the presence of a licensed riverboat employee.
2. After the customer receives the scrip he/she must get in another line to board the riverboat. The scrip also serves as the customer's boarding pass.
3. The scrip, which is time and date stamped, must be printed with boxes of denominations, of which the total of all boxes shall not exceed \$500. These boxes shall be canceled by permanent black marker at the time the patron presents the scrip in the riverboat casino. If the scrip is not signed at the time of presentation, or the date and time are not valid, the scrip shall be confiscated from the customer. If the scrip is valid and there are sufficient available boxes, the cashier shall cancel the appropriate number of boxes with a permanent black marker and complete the transaction.
4. In a situation where a customer wishes to buy chips at a table, the procedure is the same except that the dealer stops the game to execute the transaction. On many occasions the use of the scrip to convert cash to chips will slow up the game. This is another example of customer dissatisfaction arising out of the process.

<sup>1</sup> Transcript, Missouri gaming commission meeting, November 25, 1996, pages 8, 11 and 16-17 (Bruce Turner, *Salomon Brothen*); pages 44-46 (Joe Coccimiglio, *Prudential Securities*); pages 57-58, (Tom Ryan, *Bankers Trust*); pages 65-68, (Larry Klatzcin, *Donaldson, Lufkin & Jenrette*); pages 84-90, (Richard Byrne, *Merrill Lynch*);



those revenues fall short of predictions. Analysts from Wall Street tell the commission that we are exporting our tax dollars to other states. In a recent commission meeting regarding market size, a well respected gaming analyst opined that while Missouri supplies 73% of the gaming market in the St. Louis area it captures only 50% of the revenue.<sup>2</sup>

Finally, the gaming experience of consumers who do visit Missouri gaming operators is less desirable than the experience offered by competitive states. Missouri is offering a more cumbersome and less enjoyable product. The commission believes that the gaming policy for Missouri should retain the Missouri dollars in Missouri and attract dollars from other states. Our current policy has the exact opposite result.

## The Costs of Competitive Inferiority

Limiting the ability of Missouri operators to offer a competitive entertainment product has direct economic costs which are easily illustrated. Missouri gaming riverboats are larger, more luxurious and offer more non-gaming amenities than competitors in neighboring states. Yet they fail to compete in economic terms, even though the bulk of the population seeking the entertainment product lives in Missouri.

For example, the *Casino Queen* in East St. Louis, Illinois and the *Alton Belle* in Alton, Illinois combined have less capital investment than *St. Charles Riverfront Station*, which has consistently expanded and reinvested since it opened in May, 1994. In addition, these Illinois gaming facilities consist primarily of parking facilities and the gaming casino. They offer no non-gaming amenities other than limited restaurant facilities.

In spite of these negative competitive factors, the two Illinois facilities regularly outperform SCRS in spending per customer. Similarly, Illinois riverboats in the St. Louis area fare significantly better in gaming revenue per square foot, gaming revenue per position and admissions per square foot. One must question why Missouri residents will drive a longer distance to an inferior facility to spend their entertainment dollar. The answer is to spend their money on the product which they consider superior.

One must question why Missouri residents will drive a longer distance to an inferior facility to spend their entertainment dollar. The answer is to spend their money on the product which they consider superior.

pages 104-106, (John Maxwell, Standard & Poor's) and pages 115-118, (Steve Schneider, Stifel Nicolaus). See also, Minutes of Missouri gaming commission meeting, May 24, 1995.

<sup>1</sup> Missouri Gaming Commission minutes, November 25, 1996, page 27 quoting Jason Ader, Bear Stearns gaming analyst

<sup>3</sup> Examples of some of the non-gaming amenities included in Missouri projects include themed restaurants, movie theaters, hotels, meeting space, retail shopping, child care centers, micro breweries, an 18th century railroad car restored to its original luxury, fountain displays and theaters for live entertainment

## *The Problem is Clear - How does Missouri Address the Problem?*

Missouri statutes require the commission to report annually to the Governor and the General Assembly on the competitive state of the gaming industry in Missouri. For two years, the commission has advised the General Assembly that we believe that there could be a problem with the structure of the gaming industry, but that the data is incomplete. However, we now find the data to be clear and compelling. A problem exists in the Missouri gaming industry -- the gaming product is not competitive with our neighboring states. This will create negative economic results and lower tax revenues.

Due to navigational safety constraints, most Missouri riverboats do not cruise. It has been suggested by gaming analysts; and by legislation filed in prior years that the elimination of the boarding time restrictions will help Missouri gaming operators economically and be more consumer friendly. The commission believes that the current boarding time restrictions are detrimental to the consumer, and make little sense since the riverboats are not leaving the dock. They are an artificial barrier to entry and participation. Yet the boarding times are essential to enforcing the loss limit. A change in the statutes which

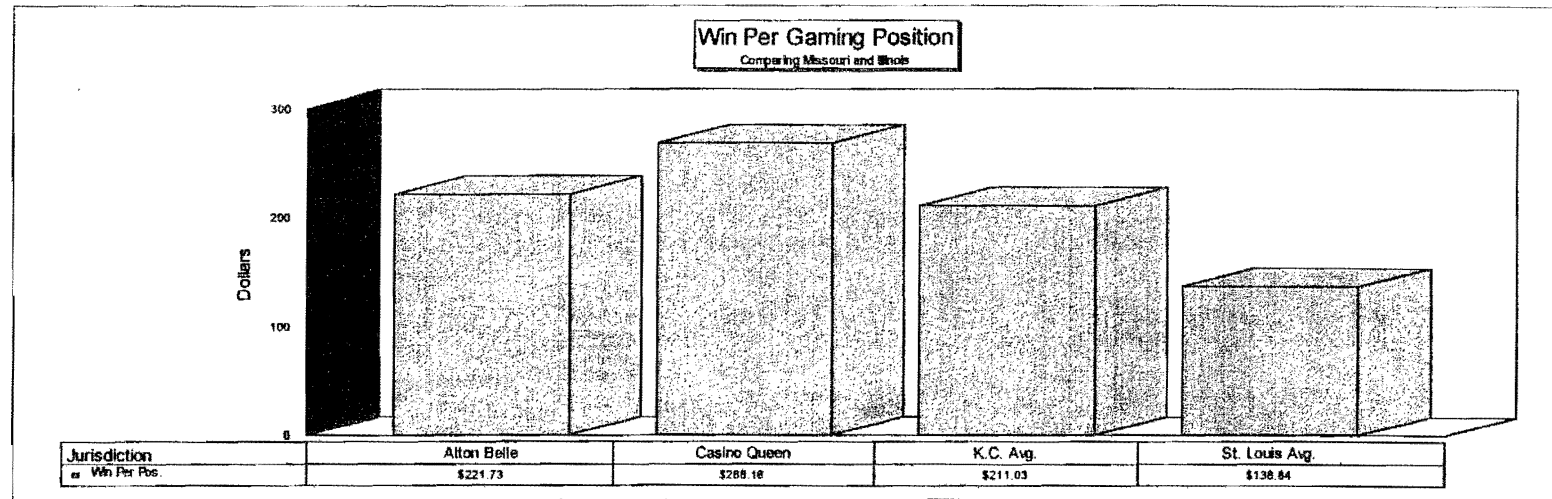
eliminates the boarding times but maintains the loss limit would make the enforcement of the loss limit impossible.

## *Findings*

Current Missouri statutes are not competitive with our adjoining states. Consequently, Missouri is at a competitive disadvantage. Repealing the loss limit would make the Missouri operators more competitive. Without this change, the Missouri gaming industry will continue to be at a competitive disadvantage, and over time, will decline rather than prosper.

## *Conclusion*

Section 313.837, RSMo, requires the commission to report annually to the general assembly on the effects of the loss limit on the competitiveness of the gaming industry in Missouri. The findings above are intended to satisfy this statutory mandate. The enactment of any changes in policy as a result of these findings are obviously the purview of the General Assembly and the Governor.



## Effect of Tax Rate on Competitiveness

The Missouri tax rate currently mirrors that of its principle competitor, the State of Illinois. The Missouri/Illinois tax rate consists of a 20% base tax on adjusted gross receipts (AGR). In Missouri, 10% of that tax (or 2% of AGR) is a local tax, imposed by state statute. The funds collected from this local tax are allocated to the home dock city or county for services necessary for the safety of the public visiting the excursion gambling boat. The remaining tax on AGR (18% of gross receipts) is placed in the "Gaming Proceeds for Education Fund" and may be spent only for public elementary, secondary and higher education.

Iowa has a graduated tax that caps out at 200% for adjusted gross receipts over \$3 million. Because the graduated rate reaches its cap at the relatively low ceiling of \$3 million, Iowa's effective tax rate is not significantly different from that of Missouri and Illinois.

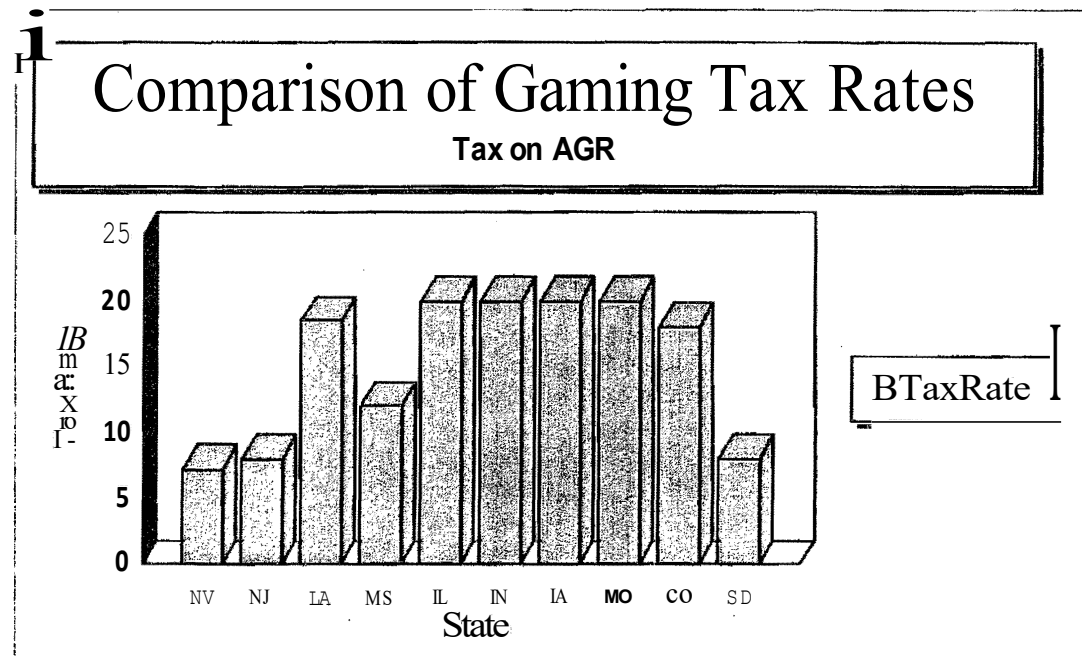
Licensees are also responsible for a \$2 admission fee for each person who participates in a gaming excursion. One dollar of this fee is remitted to the home dock city or county. The remaining dollar is used to fund the regulatory activities of the Commission. No general revenue is used for any activity of the Commission. In addition to the \$2 admission fee, the gaming boat is billed monthly for the full cost of the enforcement agents assigned to the boat. Either through fees or direct billing, the gaming operators pay for the full cost of their own regulation.

The State of Mississippi assesses a tax of 12% on AGR. Unlike Illinois, who is limited to licensing 10 gaming operations, Mississippi has not limited the number of casinos licensed, but has licensed all applicants that have been found suitable. The Missouri law does not specifically limit the number of licenses that may be issued, but places this responsibility in the hands of the Commission through a "best interests of Missouri" standard.

The state of Kansas has recently allowed casinos operated by native American Indians. These casinos are not taxed.

For your future reference, a table is contained in Appendix B setting forth the tax rate in each gaming jurisdiction and the regulatory restrictions that are imposed. The chart below is a generalization of the tax rates in the various gaming jurisdictions. Because of the subtleties of each states tax law, it is difficult to precisely chart the rates. For a definitive explanation of the tax rates, refer to the aforementioned chart in Appendix B.

The Commission does not feel that the 200% tax rate currently places our licensees at a competitive disadvantage. The commission will continue to monitor the performance of all licensees and report developments as they occur.



## Missouri Gaming Commission Contributions to Education

### Fiscal Year 1995

Gaming Proceeds for Education	\$56,616,282.04
Bingo Tax Proceeds for Education	<u>\$ 6,253,703.96</u>
<i>FY '95 Tax Revenue from Gaming</i>	<i>\$62,869,986.00</i>

### Fiscal Year 1996

Gaming Proceeds for Education	\$99,730,320.67
Bingo Tax Proceeds for Education	<u>\$ 4,684,178.52</u>
<i>FY '96 Tax Revenue from Gaming</i>	<i>\$104,414,499.19</i>
<i>Total Tax Revenue from Gaming</i>	<i>\$167,284,485.19</i>

### *Does the Gambling Money Really Go Fund Education? :*

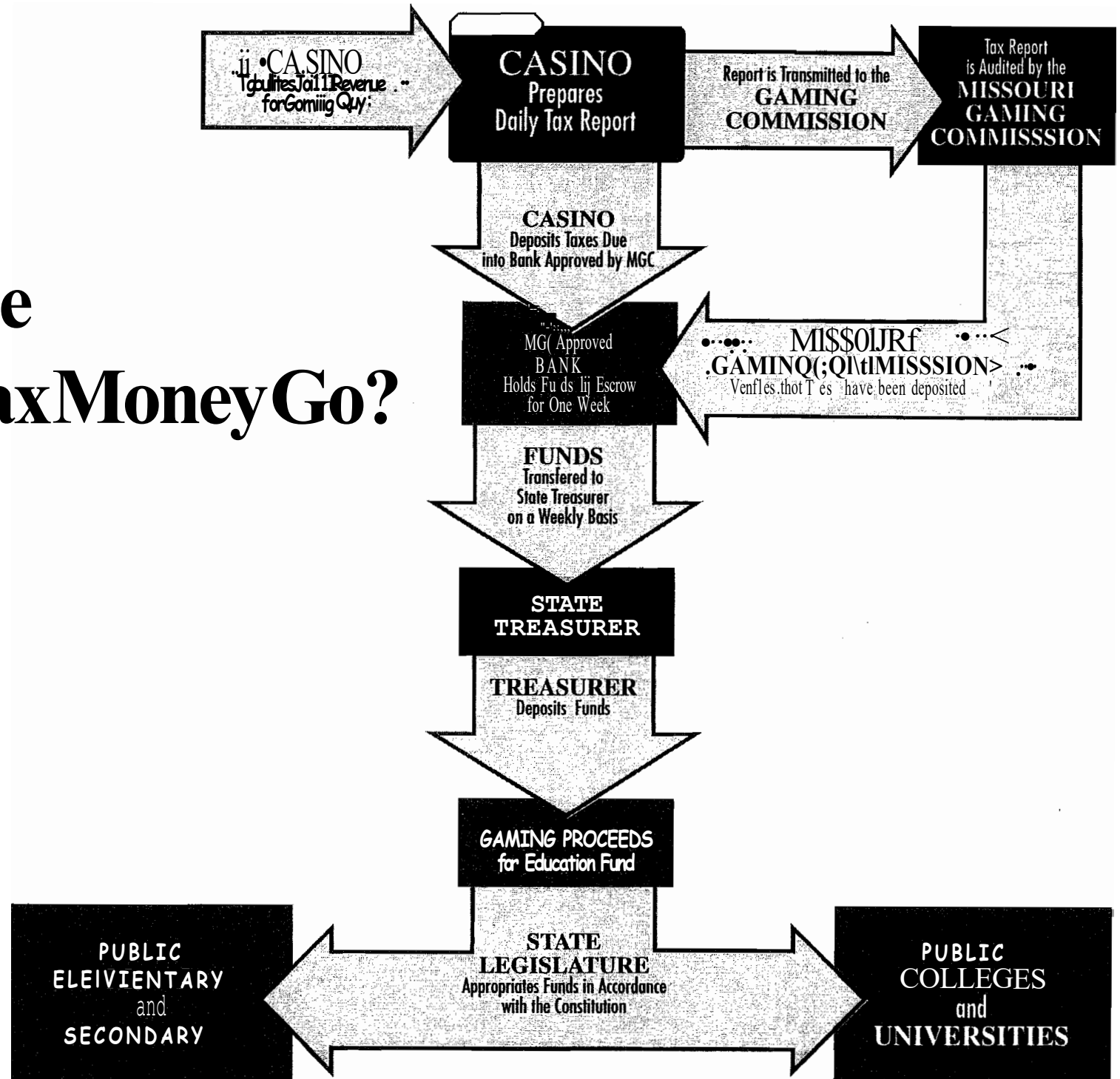
This may be the question most frequently asked of the public officials. The simple answer is, "yes, it does". Pursuant to a constitutional amendment passed by the General Assembly as S.B. 20 in 1992 and approved by the voters in a subsequent general election, all state tax money derived from the proceeds of gambling is spent on education.

The text of this constitutional provision, contained in Article III, Section 39(d), reads as follows:

All state revenues derived from the conduct of a gaming activities as are now provided hereafter by law shall be deposited in the Education Fund or otherwise provided by law on the effective date of this section; shall be appropriated beginning July 1, 1993, solely for the use of the first, second, or elementary, secondary and higher education; and shall not be included within the definition of "total state revenues" in section 17 of article X of this constitution.

The tax revenues derived from the proceeds of gambling, for the year 1998 are estimated to be \$155 million. The amount of the gaming money is added to the traditional state general revenue fund for public schools. The total state budget for education, which represents 19.9% of the total state budget or the average local school budget, is \$2.965 billion. The money was designated as a permanent fund and not replace the primary source of public school funds. The funds derived from the gaming have been used for the Outstanding Schools Fund, the School District Bond Fund, for the maintenance and capital expenditures for public colleges and universities and to supplement the school fund.

# Where Does All the Gaming Tax Money Go?





# Organizational Structure

## OFFICE OF THE EXECUTIVE DIRECTOR

Thomas J. Irwin was named Executive Director by the Commission on October 27, 1993. Mr. Irwin came to the Commission after serving 3 years as Executive Assistant to St. Louis County Executive, Buzz Westfall. Mr. Irwin is a graduate of Harvard University where he earned his masters degree from the Kennedy School of Government. He has served as the Chief Budget Officer for the Boston Police Department and was the Executive Assistant for Intergovernmental Affairs for St. Louis mayor Vince Schoemehl from 1982 to 1988. Mr. Irwin is a veteran of the United States Marine Corps, having served in Vietnam in 1968.

Mr. Irwin is responsible for the day-to-day operations of the Commission. He supervises all staff activities and reports to the Commission. Among the staff positions reporting to the Director is Public Information Officer, Harold Bailey. Mr. Bailey is responsible for organizing and distributing all public documents and reports.

In addition, there are six primary functions of the Commission that have been divided into sections that report directly to Mr. Irwin, including: Administration, Audit, Bingo, Corporate Securities, Enforcement & Investigations, and Legal & Legislative Affairs.

## ADMINISTRATION

The administration section, headed by Deputy Director Deborah A. Ferguson, provides a range of administrative, financial and technical services to help the Commission accomplish its goals. The administrative services can be divided into the following functions: accounts payable, accounts receivable, purchasing, data processing, budget, facility leasing, and human resources. Accomplishments of the administration section would not have come to pass without the assistance of Chief Accountant Denny Hodges, Personnel Officer Vicki Glenn, Records Administrator Michael Shellman, and Data Processing Manager John Blwna. The administration staff benefited from the addition of Tena Smith, Diane Riddle, and Mike Brizendine.

The administration section continues to be a focal point of activity with the continued growth of the gaming industry. The highlight of this past year was the relocation of the Jefferson City office. Planning and design for the Jefferson City office began in 1995 and culminated with the move in September, 1996. Highlights of the new building include a hearing room to conduct Commission meetings, adequate file space to house the Commission

records that will be relocated from the St. Louis office, and the merging of the Bingo and Gaming staff into one facility to enhance coordination of daily activities.

More specifically, the duties of this section are as follows:

- Billing licensees for the processing and annual licenses issued to Level One and level Two Occupational employees that work for each riverboat. To date there are approximately 9,000 licensed employees.
- Billing licensed operators for the full cost of the enforcement agents assigned to each boat.
- Maintaining all Commission financial and personnel records which includes the monthly reconciliation of the Gaming Commission fund balance and processing all payments made by the Commission.
- Preparation, and implementation of the Commission's annual budget to ensure compliance with legislative intent.
- Handling all personnel matters and employee training and establishing and implementing written office policies for Commission staff.
- Preparation of fiscal notes to provide estimates to proposed legislation.

## Data Processing

The Data Processing section, headed by John Bluma, had a busy year in 1996 which included major systems developments as well as the daunting task of moving the Jefferson City office to a new location. Some of the accomplishments of this important section include:

- Opening new commission offices for its agents at licensed premises.
- Moving the Jefferson City offices of the Riverboat Gaming and the Bingo workgroups to the new location. This involved moving all computer workstations, servers, communications processors, and printers to the new

building. The two separate networks were consolidated into one large network that provides email between all members of the two sections for the first time and allows sharing of peripheral equipment, such as laser printers.

- > Final testing and implementation of a billing system for enforcement billing to reimburse the state for expenses related to regulating the casino gaming industry.
- > Automation of annual MULES checks required of the 9,000 plus gaming occupational license holders, eliminating hundreds of hours of data entry time.
- > Upgrade of the physical inventory system to provide more complete reports and to track add-on costs to major inventory items.
- > Design and development of an occupational license history tracking system to provide a complete picture of license payments, changes in license status, duplicate badges issued, and changes in employment status.
- > Enhancing existing systems to meet new statutes and rules and regulations.

## AUDIT

The audit section is responsible for the critical function of ensuring that the operators pay their taxes promptly and accurately. This section, headed by John Davis, former Internal Revenue Service Manager, developed the Commission's tax remittal system that allows the Commission to capture tax remittance data on a daily basis. The operator's returns are audited by compliance audit staff headed up by senior accountant Kara Hardaway.

The audit section also develops audit programs, reviews and approves each operator's system of internal controls, conducts on-site performance audits, reviews the quarterly CPA audits of Adjusted Gross Receipts Tax and Admission Tax and reviews all internal audit reports prepared by the casino's internal audit staff.

During 1996, the audit section revised Minimum Internal Control Standards that all operators must meet. These standards were developed by the

audit staff after a lengthy review process that involved input from the IRS, enforcement officers and industry experts.

The audit section also implemented a system for tracking and depositing all non-tax revenue received from applicants such as application fees from applicants and reimbursements for Commission services.

A summary of some of the audit section's programs and objectives is contained on page 22.

## BINGO

The Bingo Division is comprised of three separate sections which include the Administration/ Licensing, Audit and Enforcement. The Bingo Division Supervisor is Ron Pleus. The Audit Section Supervisor is Randall Cahill and the Enforcement Section Supervisor is Sergeant Dwight Franklin. The bingo statutes have been revised significantly in recent years requiring many administrative changes to occur within the Division. Among the more daunting projects were the establishment of a new licensing category for hall providers and the implementation of a new, supplier-based, tax. Specific duties within the three sections of the Bingo Division and the recent statutory changes are briefly outlined below.

**Administrative/Licensing Section** - This section is responsible for the processing of all correspondence and the licensing and maintenance of over 1,500 operator licensees which include all regular and special event bingo operators licenses and 200 hall providers annually. This section deposits and records all tax and license receipts received on a daily basis. This unit maintains a data base of over 31,000 records of individuals that are involved in the management, conduct and/or operation of bingo games and 3,000 records of individuals involved as owners and officers of licensed Hall Providers. Currently, this staff consists of three employees, Jane Bax, Pam Murphy and Tina Freese. In conjunction with the data processing staff, the administrative section has developed an automated renewal application system which became fully operational January 1996. This system simplifies the renewal process for the licensee and eliminates wasted steps and duplicate information. The system has proven to be a tremendous time saver for the not-for-profit volunteer organizations who are required to file renewals and also helps to reduce the staffing cost and other administrative cost for the Division.

**Audit Section** - This section is responsible for the timely audit of all Bingo Product Manufacturers and Suppliers and assisting the Enforcement Section with on-site inspections of bingo operators. The audit staff has developed a comprehensive Manufacturer and Supplier audit procedure manual and has developed procedures for the inspection of bingo operators. The procedures for the inspection of bingo operators are used by both the Enforcement and Audit Staffs. The audit section has audited all of the licensed Manufacturers and Suppliers during fiscal year 1996. These audits resulted in over \$320,000.00 in unreported taxes and penalties. The auditors also assisted enforcement with inspections and investigations of unlicensed suppliers and operators. The section conducts on-site inspections of formerly licensed suppliers to determine if the products in inventory were being disposed of in accordance with the statutes. The audit staff also assists the administrative staff in auditing the operator's quarterly reports.

**Enforcement Section** - This section is headed by Sgt. Dwight Franklin, a 17 year veteran of the Missouri Highway Patrol. Sgt. Franklin has six (6) officers assigned to the enforcement section. Their duties include background investigations of all Manufacturers and Suppliers, to include all the key personnel in those companies. These investigations include criminal check, financial checks, past employment history and all litigation involving the applicant. In addition, the enforcement section is responsible for investigating complaints on the licensed bingo organizations. The complaints range from minor rule violations, to thefts of large sums of money. Complaints are received on a daily basis and are investigated on the basis of severity, location and available manpower. An additional duty of the Enforcement Section is to complete background investigations on all new potential employees of the Gaming Commission.

## *CORPORATE SECURITIES AND FINANCE*

The Commission has established a Section of Corporate Securities and Finance to address the challenge of regulating the complex financial, corporate structuring and contractual transactions involving publicly traded and privately held gaming companies. This section is comprised of staff trained in legal, accounting and business matters to perform examinations of these transactions.

The suitability issues examined by the Corporate Securities and Finance Section include complex financial and legal suitability issues such as financial soundness, corporate control, legal compliance and procedural licensing issues.

The section's examinations are coordinated closely with the Enforcement Division for background investigations and disciplinary matters.

Typical transactions that are examined by the section include mergers and acquisitions, public debt and equity issuances, and private financings, such as bank loans and credit facilities. The goal of this new section is to provide the Commission with more thorough and sophisticated investigations and analysis of the suitability of gaming companies and with a uniform system for providing this analysis on corporate securities and finance issues. Through this section, the Commission hopes to identify suitability problems of applicants and licensees earlier and more efficiently and to identify, plan for and possibly even avoid potential business closures of licensees due to financial matters.

The Corporate Securities and Finance Section is headed by the Commission's General Counsel, Greg Omer, who reports directly to the Executive Director on corporate securities and finance matters. The section also includes a Chief Financial Analyst position to be filled soon, which will oversee the work of the financial staff examining the corporate securities and finance transactions.

The Commission's Financial Manager, Pam Brown, has handled the financial analysis of the reported transactions up to now and will continue to perform many of the more complex transaction examinations and oversee the work of an accountant, Pam Wheelis, and a financial analyst (planned to be added next year), who are also assigned to the section.

## *ENFORCEMENT*

Enforcement for the Missouri Gaming Commission is provided by officers of the Missouri State Highway Patrol and agents of the Internal Revenue Service by way of Memorandums of Understanding which set forth the responsibilities of each entity.

The enforcement section is headed by Mel Fisher, former Superintendent of the Highway Patrol. The Gaming Division of the Highway Patrol is headed by Captain Dwight Hartung. There are seventy-seven officers assigned to the Gaming Division and an additional six officers assigned to the Bingo Enforcement Unit.

Some of the advantages of using Highway Patrol Officers as gaming agents include:

- the staff assigned are trained specialists in law enforcement and investigations, thus saving the Commission the time, effort and expense of recruitment and training;
- ▶ because the agents are licensed law enforcement officers, they command immediate respect when interacting with licensees and customers aboard a riverboat as well as when they are in a foreign jurisdiction conducting an investigation;
- ▶ the Commission feels that it is important to rotate enforcement staff aboard the various boats. This process is much easier with seasoned law enforcement officers who are used to being rotated between assignments as well as in and out of the gaming division;
- ▶ provides the ability to access sensitive law enforcement information from other jurisdictions;
- ▶ their experience in conducting investigations and handling emergency situations has proven invaluable.

The Commission's background investigation units consist of three Highway Patrol Officers and one IRS agent. The background investigations conducted by the Missouri Gaming Commission are thorough and take approximately four months to complete if no unusual complications or delays emerge. The Commission not only investigates the finances and activities of the company and all its key people, but traces the source of all their funds to ensure that no criminal elements are funding the operation from behind the scene. An outline that provides a sketch of a typical background investigation is contained on page 20.

## *LEGAL & LEGISLATIVE AFFAIRS*

The legal & legislative affairs section is responsible for all legal matters presented to the commission prior to litigation. Any litigation involving the commission is handled by the Attorney General's office. In addition, this section, which is headed by Deputy Director, Kevin Mullally, develops and drafts legislation endorsed by the commission as well as all rules and regulations. Moreover, the legal section manages an administrative appeals docket where Mullally serves as Hearing Officer.

Greg Omer serves as the commission's general counsel and works closely with the enforcement staff reviewing incident reports, investigative issues and possible disciplinary actions. In addition, Mr. Omer heads the Corporate Securities section.

Some of the other responsibilities of the legal section include:

- ▶ Drafting all resolutions for all commission actions; and
- ▶ preparing disciplinary complaints and denial orders for proposed action against licensees; and
- ▶ conducting quasi-legislative hearings on issues such as continuous docking and boat design; and
- ▶ providing legal research services; and
- organizing and maintaining records of all official commission actions and commission policies; and
- ▶ handling inquiries from legislators, constituents and other state regulatory agencies.

The commission's legal staff is supported by paralegal Heather Greffrath and legal secretary Susan Sundenneyer. This support staff is critical to daily operations of the legal section and is particularly valuable in the section's role in preparing and managing the rules and regulations, all documents necessary for commission meetings and all documents declaring commission policy.

In 1997, the legal section will be augmented with the addition of staff attorney, Robert Little.

## *PENDING LITIGATION*

The Missouri Gaming commission denied one occupational license in 1994, thirteen occupational licenses in 1995, and thirty-five occupational licenses in 1996. Each applicant is presumed unsuitable and has the burden of proof to prove his or her suitability to the Commission. An individual may request a hearing to attempt to prove suitability to the Commission by serving

such a request on the commission's Executive Director. The following is a list of pending litigation:

<u>Petitioner</u>	<u>Venue</u>
Bingo Systems & Supply	AHC
Cape Girardeau Elks Lodge 639	AHC
Cape Girardeau VFW Post 3838	AHC
Edwin Pete Rhodes	AHC
Ideal Bingo Supplies, Inc.	AHC
Mary Cracchiolo	AHC
Maureen L. Scott	AHC
Meramec-Amold Eagles Auxiliary	AHC
Myron B. Carter, Sr.	AHC
Pan-Education Institute	AHC
Raymond I. Drury	AHC
Raytown Women of Today	AHC
Sandra Tennini	AHC
Stanley L. Turner	AHC
Missouri Gaming Co -Oise. Action	MGC
Harrah's -Disciplinary Action	MGC
Boyd Kansas City, Inc. -Disc. Action	MGC
Jeffery Koester -Denied License	MGC
Gary Franklin -Denied License	MOC
Mark Zwolle -Disciplinary Action	MGC
Anthony Civella -Exclusion	MGC
Peter Simone -Exclusion	MGC
Yolanda Nettles	MGC
Tracy Anderson	MGC
Carrie Gentry	MGC
Jimmie B. Carsey	MGC
Cape Girardeau Elks & VFW	Circuit Court of Cape Girardeau County
MGC v. Veteran's Commission,	
SL Louis Public Schools	Missouri Supreme Court
W. Todd Akin v. MGC	Missouri Supreme Court
William D. Cammisano, Jr.	Missouri Court of Appeals-Western District
Pen-Yan Invesbment, Inc.	Missouri Court of Appeals-Western District

#### *SUMMARY OF PENDING LITIGATION*

There are fourteen bingo cases pending in the Administrative Hearing Commission.

There are three disciplinary cases at the Commission level against gaming licensees pending the outcome of *Pen-Yan Investment, Inc. v Boyd Kansas City, Inc.* and *MGC*.

*Pen-Yan Investment, Inc. v Boyd Kansas City, Inc., MGC* is pending in the Missouri Court of Appeals, Western District regarding disciplinary action taken against Boyd for associating in business affitirs with a person who has a felony police record. The Commission imposed a fine against Boyd and prohibited Boyd ffrom collecting or distributing any funds ffrom the machines under its service agreement with Pen-Yan.

*MGC v Missouri Veterans Commission, St. Louis Public Schools* is pending in the Missouri Supreme Court regarding funds received from fines imposed by the Commission.

In *W. Todd Akin et al. v. MGC*, the Circuit Court of Cole county ruled in favor of the commission on summary judgment. The suit challenges the Commission's authority to grant or deny Hanah's Maryland Heights Corp. and Players Maryland Heights, L.P. a license for a continuously docked exCW'Sion gambling boat within a man-made basin filled by water ffrom the Mississippi River. The petitioners have appealed and the matter is now before the Missouri Supreme Court.

*Cape Girardeau El/rs Lodge, et al. v MGC* is pending in the Circuit Court of Cape Girardeau County regarding the Commission's decision to suspend the Cape Girardeau Elles Lodge bingo license.

In the *Matter o/William D. Cammisano, Jr.* there is an appeal pending in the Missouri Court of Appeals, Western District regarding the Commission's decision to place Mr. Cammisano on its List of Excluded Persons.

#### *MISSOURI GAMING COMMISSION'S EXCLUSION LIST*

The Missouri Gaming Commission placed two individuals in 1994, two individuals in 1995, and two individuals in 1996 on the commission's Exclusion List. Placement of these individuals on the Exclusion List has been based on prior convictions.

As a result of placement on the Exclusion List, each individual shall not be pennitted entry into any portion of a riverboat gaming operation within the state of Missouri and shall be ejected if discovered on such premises. Furthermoe , Excluded Persons shall be prohibited ffrom contact of any kind with Missouri riverboat gaming operations. Persons placed on the List may file a written petition with the Commission to request a hearing to have their name

removed from the Exclusion List. Currently, one individual has appealed to the Western District of Missouri and two others are pending hearings by the Missouri Gaming Commission.

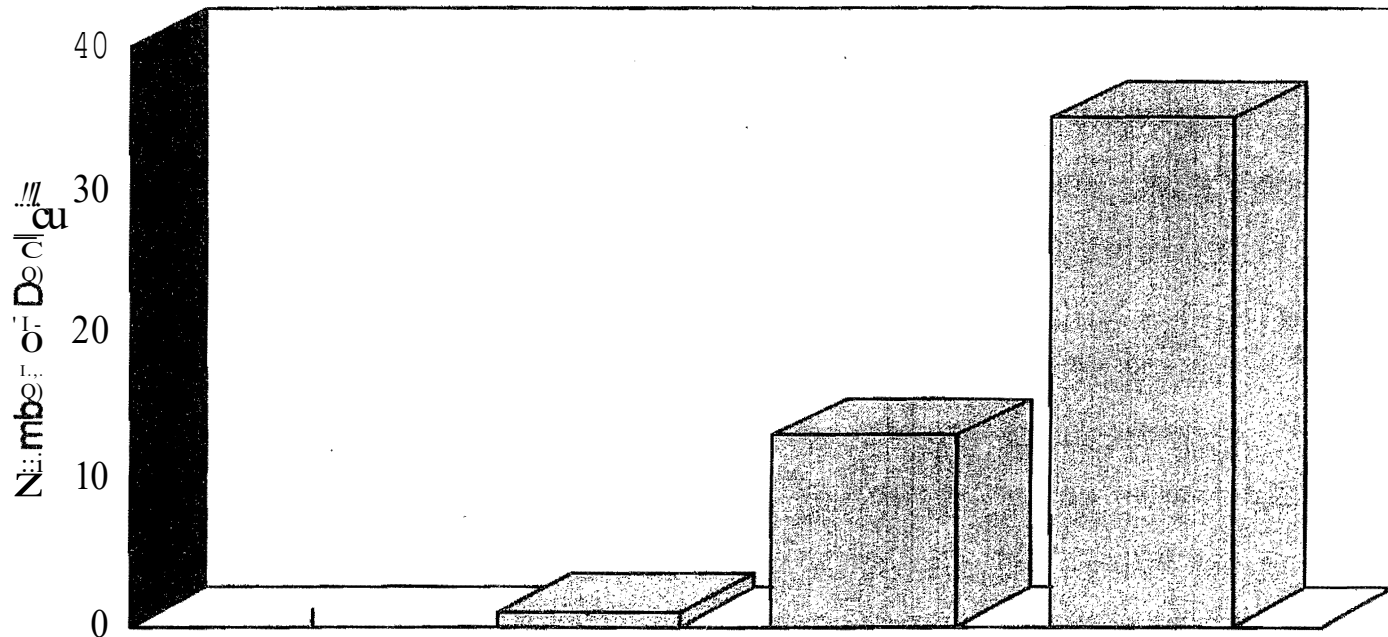
Orders for Disciplinary Action set forth statements of fact that support the proposed disciplinary action and the regulatory and statutory sections involved. Individuals may request a hearing by serving such a request on the Commission's Executive Director. Currently, four individuals have sought hearings before the Commission one of which is still pending.

# *MISSOURI GAMING COMMISSION'S DISCIPLINARY ACTIONS AGAINST OCCUPATIONAL LICENSEES*

The Missouri Gaming Commission has taken disciplinary action against twenty-eight occupational licensees as of September 30, 1996. Preliminary

## **Occupational License Denials**

1994-1996



Year	Licenses	1994	1995	1996
In Licenses	Denials	1	13	35

## Voluntary Exclusions

On December 30, 1996, after six months of research and consultation, the commission established a unique program to combat problem gambling. The List of Disassociated Persons is the result of many months of consultation with treatment professionals that help problem gamblers. The program allows problem gamblers to exclude themselves from Missouri riverboat casinos under the threat of arrest for trespassing.

In exchange for agreeing not to patronize Missouri riverboat casinos, the problem gambler is removed from all casino mailing lists and direct marketing promotions. In addition, the operators are required to deny persons on the List check cashing privileges and must take away their VIP or "player's club" card.

Treatment professionals have advised the commission that the only way for a problem gambler to get help is to admit that he/she has a problem and to accept personal responsibility for that problem by seeking treatment

The Disassociated Persons program is a valuable tool in addressing problem gambling because it requires the individual to admit to having a gambling problem, to agree to seek treatment and stay away from gambling casinos. Furthermore, it includes severe consequences if the problem gambler succumbs to the temptation to gamble. Moreover, it offers some protection to the problem gambler from the marketing promotions that encourage people to visit the casino properties.

The program operates in the following manner:

The problem gambler must obtain an application for placement on the List of Disassociated Persons from the commission;

the application contains various information about the individual, an admission that the person is a problem gambler and agrees to stay off Missouri riverboats and seek treatment, an authorization to release this information to riverboat operators as well as a Waiver releasing the commission and the licensee from any liability associated with enforcing the rules of the program;

the application must be personally presented to a commission agent at which time the information is verified and the rules of the program are explained;

the application is a closed record and its contents may only be disclosed to necessary commission and riverboat personnel;

the commission considers all applications in closed session;

once a person is placed on the List, he/she cannot petition for removal. After consulting with treatment professionals, the commission concluded that problem gambling requires lifetime treatment and therefore, there is no procedure for removal from the List.

Missouri is the first jurisdiction in the world to propose a program such as this. We will continue to monitor and refine the program and look forward to reporting to you on its impact in next year's annual report.

## Brief Timeline of Riverboat Gaming in Missouri

- ▶ May 13, 1991 - General Assembly passes House Bill 149 which authorized referendum to be submitted to the voters in the November 1992 election to determine whether the State Gaming Commission shall have the power to issue riverboat gambling licenses.
- > November 3, 1992 - Missouri voters pass referendum allowing riverboat gaming with a majority of nearly 63%.
- ▶ January 1993 - Governor Carnahan announces intentions to push legislation creating an independent Gaming Commission to oversee riverboat gambling.
  
- April 29, 1993 - SBs 10 & 11 creating the Missouri Gaming Commission are signed into law by Governor Carnahan and five Commissioners are appointed: Robert Wolfson, Chairman; Robert Clayton; William Quinn; Dr. Jenice Stewart and Avis Tucker.
  
- ▶ April 30, 1993 - *Troy Harris, et al. v. The Missouri Gaming Commission*, amended petition is filed. The petition challenges the constitutionality of Senate Bills 10 & 11.
- > May 17, 1993 - The Missouri Gaming Commission holds its first meeting.
- ▶ September 1, 1993 - Proposed Rules and Emergency Rules are adopted.
- > September 20, 1993 - 19 riverboat gaming license applications are filed with the commission.
- ▶ September 20, 1993 - Clarence E. "Mel" Fisher hired as Deputy Director for Enforcement.
- ▶ September 24, 1993 - Commission contracts with the Internal Revenue Service to perform financial investigations for the commission. Four IRS agents are assigned to the commission.
- ▶ September 28, 1993 - Commission enters into an inter-agency agreement with the Missouri State Highway Patrol to provide enforcement services for the commission.
  
- ▶ October 1, 1993 - Debbie Ferguson joins the commission as Deputy Director for Administration.
  
- November 3, 1993 - Commission hires Tom Irwin as Executive Director and Kevin Mullally as Deputy Director for Legal & Legislative Affairs.
  
- November 30, 1993 - Commission announces that it will begin background investigations on the following companies: President Riverboat Casino-Missouri; St. Charles Riverfront Station, Inc.; St. Joseph Riverboat Partners; The Missouri Gaming Company; GDC (Supplier); IGT (Supplier); Casino Tokens (Supplier); Paul-Son Dice & Card Company (Supplier).
  
- ▶ December 22, 1993 - Governor Carnahan signs Executive Order 93-SO designating the enforcement section of the Missouri Gaming Commission as a criminal justice agency.

## 1994

- > January 25, 1994 - Missouri Supreme Court, in *Troy Harris v. Missouri Gaming Commission*, strikes down games of chance including slot machines. The court ruled that the Commission did have the authority to issue licenses to riverboat where games of skill are played. Specifically mentioned as games of skill are poker and blackjack. The Court remanded six games to lower court for determination as to whether they are games of skill or chance: baccarat, craps, roulette wheel, klondike table, faro layout and video games of chance.
- ▶ February 1, 1994 - Rules and Regulations become effective.
- ▶ February 7, 1994 - Legislature passes a resolution to place constitutional amendment on the ballot which would allow the legislature to approve games of chance (slot machines) on riverboats and floating facilities on the Missouri and Mississippi Rivers.
- > April 5, 1994 - Voters defeat constitutional amendment allowing games of chance (slot machines) by an unofficial count of 1263 votes.
- ▶ April 29, 1994 - Finding of Preliminary Suitability issued to President Riverboat Casino, St. Charles Riverfront Station, St. Joseph Riverboat Partners and The Missouri Gaming Company.



## Brief Timeline of Riverboat Gaming in Missouri

- May 20, 1994 -- Governor signs into law SB 740 which defines games of chance and enacts more stringent ethics provisions. The bill also allows the commission to license a barge in an artificial basin as an excursion gambling boat if it can be demonstrated that safety concerns prevent an operator from cruising from that location.
- May 27, 1994 -- Commission authorizes as games of skill the following: Blackjack, Caribbean Stud Poker, Poker, Double Down Stud Poker, Pia Gow Poker, Poker, Texas Hold 'Em, the video representations of these games, and Craps.
- > May 27, 1994 -- Commission authorizes President Riverboat Casino-Missouri to operate the *Admiral* as a continuously docked excursion gambling boat because cruising would cause danger to the boat's passengers.
- May 27, 1994 -- Gaming Commission issues first two excursion gambling boat licenses to President Riverboat Casino in St. Louis and St. Charles Riverfront Station in St. Charles.
- > May 27, 1994 -- Initiative petition that would allow voters to approve games of chance is submitted to the Secretary of State for approval of the form of the petition.
- June 6, 1994 -- Secretary of State notifies referendum petitioners that the Attorney General has approved the form of their petition. The Secretary of State prepared the following petition title that was approved by the Attorney General:  
  
Shall the General Assembly be authorized to permit only upon the Mississippi River and the Missouri River toHeries, gift enterprises, and games of chance to be conducted on excursion gambling boats and floating facilities?
- ◆ June 9, 1994 -- Commission prioritizes Aztar Missouri Corporation, Boyd Kansas City, Inc. and Harrah's North Kansas City as companies to be investigated for licensure pursuant to II CSR 45-4.060.
- ◆ June 22, 1994 -- Gaming Commission issues licenses to St Joseph Riverboat Partners in St. Joseph and The Missouri Gaming Company in Riverside.
- > September 20, 1994 -- Commission issues a finding of preliminary suitability to Harrah's North Kansas City Corporation.
- September 20, 1994 -- Commission authorizes Harrah's North Kansas City Corporation and SL Charles Riverfront Station<sup>1</sup> to operate excursion gambling boats as continuously docked vessels. In both cases the commission found that operating a cruising vessel from the proposed site would cause danger to the boat's passengers and the project will generate permanent job creation and land-based development.
- > September 22, 1994 -- Harrah's North Kansas City Corporation is issued an excursion gambling boat license.
- > September 28, 1994 - Public hearing regarding Capitol Queen and Casino, Joe's application for an excursion gambling boat license results in the commission denying CQC's license and prohibiting them from reapplying for two years.
- October 7, 1994 -- Commission places William D. Cammisano, Jr. and John Tennini on its list of excluded persons.
- November 8, 1994 -- Voters approve games of chance.
- ◆ December 9, 1994 -- Games of chance are allowed on riverboats.
- > December 27, 1994 - St. Charles Riverfront Station is issued a license to operate the SL Charles II as an excursion gambling boat. This marks the first time the commission has licensed a second excursion gambling boat for a single development

---

<sup>1</sup> The approval was for St Charles Riverfront Station's second boat. The first boat continued to cruise until April 16, 1996.

## Brief Timeline of Riverboat Gaming in Missouri

1995

- ▶ February 22, 1995 – Commission announces it will begin background investigation on Hilton Kansas City Corporation for an excursion gambling boat license.

March 30, 1995 - State Auditor releases final audit report of the Missouri Gaming Commission. No major deficiencies are noted.

- April 20, 1995 - Commission repays \$3 million start-up loan to state general revenue fund.
- > April 25, 1995 - Commission approves continuous docking petitions for Boyd Kansas City, Inc. and Hilton Kansas City Corporation.
- ▶ April 25, 1995 - The commission issues a finding of preliminary suitability to Aztar Missouri Gaming Corporation.
- > April 26, 1995 - The commission issues an excursion gambling boat license to Aztar Missouri Gaming Corporation in Caruthersville, Missouri.
- > May 24, 1995 - The commission announces it will begin background investigations on the following companies: Harrah's Maryland Heights Corporation; Kansas City Station, Inc.; Players Maryland Heights, Inc.
- ▶ August 28, 1995 - Pursuant to House Bill 574, the duties of the Missouri Horse Racing Commission are transferred to the Gaming Commission.
- > September 12, 1995 - The commission issues a finding of preliminary suitability to Boyd Kansas City, Inc.
- ▶ September 13, 1995 - The commission grants the petition of Harrah's Maryland Heights Corporation and Players Maryland Heights, Inc. to operate continuously docked excursion gambling boats at their joint venture in Maryland Heights.
- ▶ September 13, 1995 - The commission issues an excursion gambling boat license to Boyd Kansas City, Inc.

- > November 16, 1995 - The commission fines the following companies for associating with, either socially or in business affairs, persons with felony police records or persons with a notorious or unsavory reputation: Boyd Kansas City, Inc.; Harrah's North Kansas City Corporation; The Missouri Gaming Company.

1996

- February 15, 1996 - The commission grants continuous docking rights to Aztar Missouri Gaming Corporation for a second boat in Caruthersville, Harrah's North Kansas City for a second boat, and Kansas City Station Corporation for two boats in Kansas City.
- > April 16, 1996 - The commission grants continuous docking rights to Argosy in Riverside, Missouri; St. Joseph Riverboat Partners; and St. Charles Riverfront Station.
- > May 15, 1996 - The commission issues a license to Harrah's North Kansas City for the *Lucky Star*. This is the second boat at the Harrah's North Kansas City facility. Included in the project is a 200-room hotel, expanded parking and meeting space.
- > June 19, 1996 – The commission places William Cammisano, Jr. on Exclusion List.
- ▶ June 27, 1996 - The commission places Peter Simone and Anthony T. Civella on Exclusion List.
- > August 28, 1996 - The commission takes disciplinary action against Boyd Kansas City, Inc. for periodic failure to take and report turnstile readings.
- > October 11, 1996 - The commission issues a finding of preliminary suitability to Hilton Kansas City Corporation and Flamingo Hilton Riverboat Casino, L.P.

*October 18, 1996 - The commission issues a license to Hilton Kansas City Corporation and a license to Flamingo Hilton Riverboat Casino, L.P.*

# Outline of a Background Investigation

## Review Application for Completion

Establish number of key people;

Check disclosure forms for completeness;

Check tax release forms;

## City Selection Process

Contact city to determine how the gaming operator was selected;

Interview Mayor and City Council members;

If a steering committee was used, interview members of that committee;

Determine if any city officials own stock in the selected gaming company;

Obtain minutes of council meetings that pertain to riverboat issues:  
(a) selection, (b) resolution, and (c) ordinance;

Contact city attorney who handled negotiations with gaming company and obtain correspondence between city and gaming company;

Contact City Economic Development Director (if applicable)

## Docksite

Land selected for gaming operation;

- J Who was it purchased from (how long have they owned the property);
- J Price (copy of contract);
- J Copy of plat map and legal description;
- J Determine if any of city officials or selection committee members have ownership interest in docksite;

## Corps of Engineers Permit

J Status;

J Any concerns by Corps;

J Wetlands involved;

Contact D.N.R. for any known concerns in area;

> Check with city for any known dumpsites with possible hazardous material

Developmental agreement between city and gaming operator (obtain copy from city);

Determine if development is feasible;

J Is support facility land based or floating;

J Projected number of jobs, economic aid to area;

J Traffic flow to area - what improvements are needed - who will pay for improvements

## Riverboat

Locate boat and obtain all information about boat (cruise schedule, liability carrier);

Establish design of riverboat;

Determine emergency medical plan for boat;

Determine if Coast Guard and other safety requirements have been met;

## Gaming Operator (Public Corporation, Partnership, Private Company)

Establish contact person with operator;

J Determine attorney of record for gaming company;

J Any missing items from application, advise contact person;

Establish home office (Financial Headquarters)

J Determine a good date and location where all key people can be contacted for a personal interview;

J Where can financial record be located;

## Outline of a Background Investigation

- J* Breakdown of management (corporate, Board of Directors, major stockholders);
- J* Establish flow chart of key people and companies owned by gaming operator;

✧ Investigation of Key People will include but not be limited to the following:

- J* Check previous employment work records;
- J* Check state, local and federal intelligence files;
- J* Check for other gaming licenses, if applicable (check with appropriate regulators);
- J* Check state, federal and local courts for any civil litigation;
- J* Check for any arrest record;
- J* Check personal and business credit;
- J* Check state and local tax status, IRS will handle federal taxes;

✧ Other locations of gaming operations (currently operating and pending locations);

- J* Contact gaming regulators for respective locations;
- J* Travel to sites to view operations

Establish a file for all key people investigated with summaries; establish a file for financial records with summary of financial viability of company and ability to complete obligations to the city and State of Missouri. Establish a file for other locations of licensure along with summary.

### *Associated Investigations*

- ✧ All allegations of Any nature must be investigated and a file established with a written summary;
- ✧ Associated investigations must be done in a complete and thorough manner and all reports written accurately;
- > Upon completion of all investigations, complete reports and summaries, a separate press releasable summary must be written. This summary must be approved by Gaming Commission legal staff

**Missouri Gaming Commission  
Compliance Audit Objectives for Licensees**

<b>Audit Area</b>	<b>Objective</b>
Ticket/Turnstile	To ensure accuracy of ticket and turnstile counts reported to MGC including comps/NIPs, stayovers and promotions
Table Games	To ensure accuracy of AGR for table games reported to MGC
Electronic Games	To ensure accuracy of AGR for electronic games reported to MGC
Cage Accountability	To ensure accuracy of cage accountability forms and compliance with internal controls and tax reporting regulations
Observations: Cage, Main Bank, Pit Area, Slot Area, Turnstile, Ticketing	
Purchase/Redemptions	To determine that cashiers are complying with internal controls for chips, tokens, gaming scrip and cash
\$500 Loss Limit	To determine compliance with MO statutes and internal controls
Stayover Procedures	To determine compliance with MGC regulations and internal controls
Manual Jackpot Payouts	To ensure that manual jackpot payouts are properly handled and the required tax forms are completed
Hopper Fills	To ensure that hopper fills are properly handled and comply with internal controls
Table Fills	To ensure that table fills are properly handled and comply with internal controls
Table Credits	To ensure that table credits are properly handled and comply with internal controls
Patron Tracking/Currency Transaction Reporting	To ensure that tracking procedures comply with internal controls and the currency transactions are properly completed
Imprest Bank Balancing	To ensure that proper balancing and accountability is performed during a shift change
Coin Vault	To ensure proper maintenance of coin, chip and token inventory
Satellite Cages/Slot Booths	To ensure compliance with internal controls and consistency with main cage procedures
Tips/Gratuities	To ensure compliance with MGC regulations and internal controls
Cage Access/Security	To ensure compliance with internal controls
Turnstile	To ensure accuracy of turnstile count for admissions tax calculation
Ticketing	To ensure compliance with internal controls and proper handling of stubs, voids and issuance
Miscellaneous/Other	
Surveillance Tapes	To review activity for bard, soft and tip counts and drops to verify compliance with internal controls
Workpaper Preparation and Audit Reports	To establish standardized procedures for MGC audit workpapers and audit reports

**Missouri Gaming Commission  
Semi-Annual Financial Audit Objectives for Licensees**

<b>Audit Area</b>	<b>Objective</b>
Monthly Financial Statement Review	To perform a preliminary review of monthly financial statement information for proper completion of financial statement templates, verification of adjusted gross receipts to MGC reports, and to detect any unusual items which justify further review when conducting on-site audit.
Engagement Letters	To give advance notification to each boat of the date and scope of audit being performed.
Financial Statement Verification	To determine consistency of monthly financial statement information submitted to MGC with boat's general ledger system.
Balance Sheet Accounts	
Cash/Cash Reserve Balance	To determine the existence, consistency and fair presentation of the cash balance on the monthly financial statements.
Cash Receipts	To determine the consistency and fair presentation of the cash balance on the monthly financial statements and the source of large cash receipts other than gaming revenue.
Cash Disbursements	To determine the consistency and fair presentation of the cash balance on the monthly financial statements and to trace the outflow of large cash disbursements.
Accounts/Notes Receivable	To determine the consistency and fair presentation of the accounts receivable and/or notes receivable balance in the monthly financial statements.
Accrued Admission and Gaming Tax Liability	To determine the consistency and fair presentation of the accrued admission/gaming tax liability balance in the monthly financial statements.
Chip and Token Liability	To determine the consistency and fair presentation of the chip and token liability balance in the monthly financial statements.
Progressive Jackpot Liability	To determine the consistency and fair presentation of the progressive jackpot liability balance in the monthly financial statements.
Tips and Gratuities (Accrued Liability)	To determine the consistency and fair presentation of the accrued tips and gratuities liability in the monthly financial statements.
Customer Deposit Liability	To determine the consistency and fair presentation of the customer deposit liabilities in the monthly fiscal statements.
Accounts Payable	To determine the consistency and fair presentation of accounts payable balance in the monthly financial statements.
Income Statement Accounts	
Revenue - Table Games	To determine the consistency and fair presentation of table games revenue as reported to MGC daily and in the monthly financial statements.
Revenue - Electronic Games	To determine the consistency and fair presentation of electronic games revenue as reported to MGC daily and in the monthly financial statements.

Missouri **Gaming** Commission  
Semi-Annual Financial Audit Objectives for Lkeosees

Revenue - Admissions	To determine the consistency and fair presentation of admissions revenue as reported to MGC daily and in the monthly financial statements.
Promotional Expense	To determine that comps are properly recorded as expenses and not deducted from revenue in accordance with GAAP.
Pre-Opening Costs	To determine whether certain pre-opening and licensing costs are properly expensed or amortized over future periods in accordance with GAAP
Workpaper Preparation and Audit Reports	To establish standardized procedures for MOC audit workpapers and audit reports.

# Appendix A

---

## **Gaming Operator Tax Summaries**





# **AROGSY RIVERSIDE CASINO**

## **PERFORMANCE SUMMARY**

**Fiscal year ended June 30, 1995**

MONTH	TOTAL AGR	TABLE AGR	TABLE % OF TOTAL AGR	SLOT AGR	SLOT % OF TOTAL AGR	ADMISSIONS	WIN PER ADMISSION	DAILY WIN PER TABLE	DAILY WIN PER SLOT	DAILY WIN PER POSITION	DAILY WIN PER SQ FOOT
Aug-94	5,366,862	3,737,992	69.65%	1,628,870	30.35%	181,963	29.49	1,586.58	124.81	216.68	5.77
Sep-94	5,569,796	3,952,937	70.97%	1,616,860	29.03%	177,635	31.36	1,733.74	128.02	232.37	6.19
Oct-94	4,340,064	3,155,461	72.71%	1,184,603	27.29%	136,613	31.77	1,339.33	90.77	175.22	4.67
Nov-94	4,019,051	2,896,091	72.06%	1,122,960	27.94%	133,330	30.14	1,270.22	88.91	167.67	4.47
**Dec-94	5,072,086	2,842,929	56.05%	2,229,157	43.95%	184,526	27.49	1,554.36	83.32	148.47	5.45
Jan-95	6,646,054	3,131,076	47.11%	3,514,978	52.89%	226,934	29.29	1,711.91	129.73	192.80	7.15
Feb-95	7,060,288	3,054,165	43.26%	4,006,123	56.74%	244,881	28.83	1,848.77	162.96	226.15	8.41
Mar-95	7,277,275	2,868,629	39.42%	4,408,645	60.58%	253,449	28.71	1,568.41	159.97	208.67	7.83
Apr-95	7,484,955	2,924,611	39.07%	4,560,343	60.93%	239,045	31.31	1,652.32	170.99	221.78	8.32
May-95	7,370,780	2,743,438	37.22%	4,627,342	62.78%	259,045	28.45	1,499.97	166.41	210.04	7.93
Jun-95	6,979,363	2,552,304	36.57%	4,427,058	63.43%	244,216	28.58	1,492.58	165.44	208.09	7.75
TOTALS:	67,186,573	33,859,633	50.40%	33,326,940	49.60%	2,281,637	29.45				

**Fiscal Year Ended June 30, 1996**

MONTH	TOTAL AGR	TABLE AGR	TABLE % OF TOTAL AGR	SLOT AGR	SLOT % OF TOTAL AGR	ADMISSIONS	WIN PER ADMISSION	DAILY WIN PER TABLE	DAILY WIN PER SLOT	DAILY WIN PER POSITION	DAILY WIN PER SQ FOOT
Jul-95	7,517,957	2,473,575	32.90%	5,044,382	67.10%	279,960	26.85	1,399.87	174.97	210.52	8.08
Aug-95	7,813,226	2,580,067	33.02%	5,233,159	66.98%	290,728	26.87	1,460.14	181.32	218.59	8.40
Sep-95	7,401,526	2,447,319	33.07%	4,954,206	66.93%	265,662	27.86	1,431.18	177.38	213.98	8.22
Oct-95	7,192,284	2,405,716	33.45%	4,786,568	66.55%	251,129	28.64	1,361.47	165.85	201.22	7.73
Nov-95	6,771,690	2,222,842	32.83%	4,548,848	67.17%	246,819	27.44	1,277.50	162.87	194.92	7.52
Dec-95	6,912,444	2,317,863	33.53%	4,594,581	66.47%	258,089	26.78	1,289.13	156.51	190.26	7.43
Jan-96	6,453,260	2,005,465	31.08%	4,447,795	68.92%	256,948	25.12	1,115.39	150.24	176.41	6.94
Feb-96	7,389,019	2,376,581	32.16%	5,012,438	67.84%	325,003	22.74	1,412.95	187.45	223.64	8.80
Mar-96	8,363,429	2,623,687	31.37%	5,739,743	68.63%	357,892	23.37	1,459.23	193.88	228.63	8.99
Apr-96	8,044,985	2,585,832	32.14%	5,459,154	67.86%	330,099	24.37	1,486.11	190.55	227.26	8.94
May-96	7,246,960	2,254,593	31.11%	4,992,367	68.89%	306,290	23.66	1,212.15	168.63	196.45	7.79
Jun-96	6,598,201	1,983,280	30.06%	4,614,921	69.94%	279,050	23.65	1,101.82	161.08	184.82	7.33
TOTALS:	87,704,983	28,276,820	32.24%	59,428,162	67.76%	3,447,669	25.44				

**Fiscal Year 1997 (July thru December 1996)**

MONTH	TOTAL AGR	TABLE AGR	TABLE % OF TOTAL AGR	SLOT AGR	SLOT % OF TOTAL AGR	ADMISSIONS	WIN PER ADMISSION	DAILY WIN PER TABLE	DAILY WIN PER SLOT	DAILY WIN PER POSITION	DAILY WIN PER SQ FOOT
Jul-96	7,242,647	2,299,519	31.75%	4,943,128	68.25%	316,722	22.87	1,277.51	172.54	202.88	8.05
Aug-96	7,073,796	2,265,205	32.02%	4,808,591	67.98%	314,802	22.47	1,258.45	167.84	198.15	7.86
Sep-96	6,253,492	1,645,527	26.31%	4,607,965	73.69%	286,537	21.82	914.18	160.84	175.17	6.95
Oct-96	5,656,395	1,560,539	27.59%	4,095,856	72.41%	270,320	20.92	866.97	142.96	158.44	6.28
Nov-96	6,052,103	1,749,568	28.91%	4,302,535	71.09%	280,189	21.60	971.98	150.18	169.53	6.72
Dec-96	5,987,073	1,736,423	29.00%	4,250,650	71.00%	283,619	21.11	964.68	148.36	167.71	6.65
TOTALS:	38,265,506	11,256,782	29.42%	27,008,724	70.58%	1,752,189	21.84				

GRAND

TOTALS:	7,193,118	73,393,235	38.00%	119,763,826	62.00%	7,481,496	25.82				
---------	-----------	------------	--------	-------------	--------	-----------	-------	--	--	--	--

• December 1994 figures reflect the first month of operations with legalized slot machines

CASINO AZTAR  
PERFORMANCE SUMMARY  
Fiscal year ended June 30, 1995

MONTH	TOTAL AGR	TABLE AGR	TABLE % OF TOTAL AGR	SLOT AGR	SLOT % OF TOTAL AGR	ADMISSIONS	WIN PER ADMISSION	DAILY WIN PER TABLE	DAILY WIN PER SLOT	DAILY WIN PER POSITION	DAILY WIN PER SQ FOOT
May-95	1,542,051	551,362	35.76%	990,689	64.24%	53,527	28.81	635.21	63.92	82.91	4.78
Jun-95	1,497,828	567,659	37.90%	930,169	62.10%	49,660	30.16	675.78	61.89	83.07	4.80
TOTALS:	3,039,878	1,119,021	36.81%	1,920,858	63.19%	103,187	29.48				

Fiscal Year Ended June 30, 1996

MONTH	TOTAL AGR	TABLE AGR	TABLE % OF TOTAL AGR	SLOT AGR	SLOT % OF TOTAL AGR	ADMISSIONS	WIN PER ADMISSION	DAILY WIN PER TABLE	DAILY WIN PER SLOT	DAILY WIN PER POSITION	DAILY WIN PER SQ FOOT
Jul-95	2,060,334	756,858	36.73%	1,303,476	63.27%	68,636	30.02	871.96	83.76	110.40	6.39
Aug-95	2,053,105	662,744	32.28%	1,390,362	67.72%	75,053	27.36	763.53	89.88	110.57	6.37
Sep-95	2,052,035	742,378	36.18%	1,309,657	63.82%	73,274	28.00	883.78	88.01	114.77	6.58
Oct-95	1,865,419	610,572	32.73%	1,254,848	67.27%	62,972	29.62	703.42	81.61	100.96	5.98
Nov-95	1,739,459	646,056	37.14%	1,093,403	62.86%	54,194	32.10	769.11	74.08	97.78	5.58
Dec-95	1,845,824	668,943	36.24%	1,176,882	63.76%	56,293	32.79	770.67	84.55	109.45	5.73
Jan-96	1,594,982	599,874	37.61%	995,108	62.39%	54,630	29.20	716.70	72.14	93.38	4.95
Feb-96	2,032,111	647,506	31.86%	1,384,605	68.14%	65,620	30.97	858.76	107.29	129.52	6.74
Mar-96	2,532,115	721,792	28.51%	1,810,324	71.49%	92,559	27.36	862.36	133.02	149.87	7.85
Apr-96	2,060,136	594,712	28.87%	1,465,424	71.13%	68,763	29.96	734.21	111.27	126.00	6.39
May-96	2,048,919	673,295	32.86%	1,375,624	67.14%	63,269	32.38	804.41	102.25	122.17	6.36
Jun-96	1,907,848	533,178	27.95%	1,374,670	72.05%	62,287	30.63	658.24	105.58	117.55	6.11
TOTALS:	23,792,287	7,857,906	33.03%	15,934,381	66.97%	797,550	29.83				

Fiscal Year 1997 (July thru December 1996)

MONTH	TOTAL AGR	TABLE AGR	TABLE % OF TOTAL AGR	SLOT AGR	SLOT % OF TOTAL AGR	ADMISSIONS	WIN PER ADMISSION	DAILY WIN PER TABLE	DAILY WIN PER SLOT	DAILY WIN PER POSITION	DAILY WIN PER SQ FOOT
Jul-96	2,017,722	565,454	28.02%	1,452,268	71.98%	70,311	28.70	698.09	111.54	124.32	6.47
Aug-96	2,017,133	538,343	26.69%	1,478,790	73.31%	74,559	27.05	664.62	113.58	124.28	6.47
Sep-96	1,950,635	573,535	29.40%	1,377,100	70.60%	62,406	31.26	708.07	105.77	120.19	6.25
Oct-96	1,718,084	446,936	26.01%	1,271,148	73.99%	59,085	29.08	551.77	97.63	105.86	5.51
Nov-96	1,885,874	528,036	28.00%	1,357,838	72.00%	62,033	30.40	651.90	104.27	116.18	6.04
Dec-96	1,687,889	504,577	29.89%	1,183,312	70.11%	60,329	27.98	622.93	90.88	104.00	5.41
TOTALS:	11,277,136	3,166,881	27.99%	8,110,255	72.01%	388,723	29.01				

GRAND TOTALS: 11,277,136 3,166,881 27.99% 8,110,255 72.01% 388,723 29.01

• Casino Aztar began operations, April 27, 1995

## FLAMINGO HILTON PERFORMANCE SUMMARY

MONTH	TOTAL AGR	TABLE AGR	TABLE % OF TOTAL AGR	SLOT AGR	SLOT % OF TOTAL AGR	ADMISSIONS	ADMISSION	DAILY WIN PER TABLE	DAILY WIN PER SLOT	DAILY WIN PER POSITION	DAILY WIN PER SQ FOOT
Nov-96	4,295,120	1,620,599	37.73%	2,674,521	62.27%	255,093	16.84	1,200.44	137.45	198.85	7.95
Dec-96	4,020,934	1,422,067	35.37%	2,598,868	64.63%	229,180	17.54	1,019.40	133.56	186.15	7.45
TOTALS:	8,316,054	3,042,665	36.59%	5,273,389	63.41%	484,273	17.17				

**The Flamingo Hilton Casino commenced operations, October 18, 1996**

[illegible][illegible][illegible]

HARRAHS NORTH KANSAS CITY  
PERFORMANCE SUMMARY  
Fiscal year ended June 30, 1995

MONTH	TOTAL AGR	TABLE AGR	TABLE % OF TOTAL AGR	SLOT AGR	SLOT % OF TOTAL AGR	ADMISSIONS	WIN PER ADMISSION	DAILY WIN PER TABLE	DAILY WIN PER SLOT	DAILY WIN PER POSITION	DAILY WIN PER SQ FOOT
*Sep-94	1,126,040	492,7161	43.76%	633,324	56.24%	40,845	27.57	582.41	87.20:	101.23	3.96
Oct-94	5,388,329	3,330,347	61.81%	2,057,9831	38.19%	183,842	29.31	1,142.88	82.26!	140.63	5.50
Nov-94	6,480,151	4,340,856	66.99%	2,139,295	33.01%	236,233	27.43	1,539.31	88.36	174.76	6.62
**Dec-94	8,151,618	4,524,567	55.51%	3,627,051	44.49%	318,614	25.58	1,801.90	127.73	207.21	8.32
Jan-95	9,742,487	4,774,337	49.01%	4,968,150	50.99%	365,433	26.66	1,878.18	174.20	245.91	9.95
Feb-95	9,673,001	4,346,806	44.94%	5,326,194	55.06%	342,466	28.25	1,805.15	205.42	265.13	10.93
Mar-95	11,214,361	4,687,797	41.80%	6,526,564	58.20%	386,215	29.04	1,758.36	233.93	276.78	11.45
Apr-95	11,512,912	4,527,022	39.32%	6,985,889	60.68%	398,085	28.92	1,754.66	251.47	294.52	12.14
May-95	11,608,026	4,217,210	36.33%	7,390,816	63.67%	418,495	27.74	1,581.851	257.47	287.38	11.85
Jun-95	11,156,513	4,121,676	36.94%	7,034,838	63.06%	413,673	26.97	1,717.36	242.25	302.10	11.77
TOTALS:	86,053,437	39,363,334	45.74%	46,690,103	54.26%	3,103,901	27.72				

Fiscal Year Ended June 30, 1996

MONTH	TOTAL AGR	TABLE AGR	TABLE % OF TOTAL AGR	SLOT AGR	SLOT % OF TOTAL AGR	ADMISSIONS	WIN PER ADMISSION	DAILY WIN PER TABLE	DAILY WIN PER SLOT	DAILY WIN PER POSITION	DAILY WIN PER SQ FOOT
Jul-95	12,627,258	4,575,856	36.24%	8,051,402	63.76%	461,737	27.35	1,845.10	277.25	321.06	12.89
Aug-95	12,848,930	4,497,963	35.58%	8,150,967	64.44%	466,772	27.10	1,813.69	271.35	311.00	12.91
Sep-95	11,631,477	3,959,481	34.04%	7,671,996	65.96%	403,642	28.82	1,649.78	263.91	295.52	12.27
Ocl-95	11,541,331	3,998,771	34.65%	7,542,560	65.35%	401,155	28.77	1,573.08	251.09	283.77	11.78
Nov-95	10,998,088	4,152,864	37.76%	6,845,224	62.24%	371,682	29.59	1,730.36	235.47	279.42	11.60
Dec-95	10,682,578	3,805,706	35.63%	6,876,871	64.37%	371,500	28.76	1,534.56	228.93	262.65	10.91
Jan-96	10,426,800	3,795,468	36.40%	6,631,332	63.60%	354,003	29.45	1,530.43	220.76	256.36	10.64
Feb-96	11,258,825	3,713,909	32.99%	7,544,916	67.01%	390,226	28.85	1,600.82	268.49	295.91	12.29
Mar-96	11,665,383	3,738,962	32.05%	7,926,421	67.95%	430,581	27.09	1,723.02	253.41	289.91	11.91
Apr-96	10,647,073	3,159,818	29.68%	7,487,255	70.32%	395,103	26.95	1,504.68	247.35	273.42	11.23
-May-96	13,549,089	4,401,740	32.49%	9,147,349	67.51%	578,214	23.43	1,302.68	156.12	189.53	7.10
Jun-96	13,815,785	4,472,145	32.37%	9,343,640	67.63%	622,371	22.20	1,367.63	164.79	199.71	7.48
TOTALS:	141,492,816	48,272,883	34.12%	93,219,934	65.88%	5,246,986	26.97				

Fiscal Year 1997 (July thru December 1996)

MONTH	TOTAL AGR	TABLE AGR	TABLE % OF TOTAL AGR	SLOT AGR	SLOT % OF TOTAL AGR	ADMISSIONS	WIN PER ADMISSION	DAILY WIN PER TABLE	DAILY WIN PER SLOT	DAILY WIN PER POSITION	DAILY WIN PER SQ FOOT
Jul-96	14,401,267	4,529,406	31.45%	9,871,861	68.55%	660,064	21.82	1,385.14	174.11	208.17	7.79
Aug-96	15,354,410	4,901,636	31.92%	10,452,774	68.08%	702,912	21.84	1,498.97	184.35	221.95	8.31
Sep-96	14,306,766	4,364,506	30.51%	9,942,260	69.49%	648,977	22.05	1,334.71	175.35	206.80	7.74
Oct-96	14,096,377	4,276,089	30.33%	9,820,288	69.67%	635,979	22.16	1,307.67	173.20	203.76	7.63
Nov-96	13,893,177	4,481,854	32.26%	9,411,324	67.74%	612,125	22.70	1,370.60	165.98	200.83	7.52
Dec-96	14,088,145	4,447,340	31.57%	9,640,805	68.43%	641,845	21.95	1,360.04	170.03	203.64	7.62
TOTALS:	86,140,143	27,000,831	31.35%	59,139,312	68.65%	3,901,902	22.08				

GRAND TOTALS:	313,686,196	114,636,848	36.55%	199,049,348	63.45%	12,252,789	25.60				
---------------	-------------	-------------	--------	-------------	--------	------------	-------	--	--	--	--

- Hilffahs Non.h Ka... City began operallona, September 22, 1994
- 8aconcl docktldle culno began optndlonll, May 11, 11N

PRESIDENT CASINO  
PERFORMANCE SUMMARY  
Fiscal year ended June 30, 1995

MONTH	TOTAL AGR	TABLE AGR	TABLE % OF TOTAL AGR	SLOT AGR	SLOT % OF TOTAL AGR	ADMISSIONS	WIN PER ADMISSION	DAILY WIN PER TABLE	DAILY WIN PER SLOT	DAILY WIN PER POSITION	DAILY WIN PER SQ FOOT
Aug-94	2,831,841	1,985,969	70.13%	845,872	29.87%	174,978	18.181	736.36	60.50	102.52	1.30
Sep-94	3,217,222	2,244,590	69.77%	972,632	30.23%	183,987	17.491	860.00	71.89	120.36	1.53
Oct-94	3,284,483	2,320,233	70.64%	964,250	29.36%	182,234	18.02	860.30	88.87	118.91	1.51
Nov-94	3,108,966	2,203,269	70.87%	905,697	29.13%	168,980	18.40	844.16	66.94	118.31	1.48
**Dec-94	6,912,438	2,761,847	39.95%	4,150,591	60.05%	357,481	19.34	1,254.81	93.11	132.41	3.29
Jan-95	6,578,473	2,380,536	36.19%	4,197,938	63.81%	333,385	19.73	1,081.57	94.17	126.01	3.13
Feb-95	6,686,708	2,465,671	36.87%	4,221,037	63.13%	327,301	20.43	1,240.28	104.83	128.09	3.41
Mar-95	6,959,047	2,554,585	36.71%	4,404,462	63.29%	368,055	18.91	1,160.65	107.15	141.81	3.31
Apr-95	6,542,134	2,081,183	31.81%	4,460,952	68.19%	350,754	18.65	1,101.08	103.91	130.04	3.12
-May-95	1,962,729	685,944	34.95%	1,276,785	65.05%	98,899	19.85	966.12	89.22	117.04	2.80
-Jun-95	2,298,535	707,369	30.77%	1,591,166	69.23%	114,214	20.12	996.29	120.00	145.20	3.28
TOTALS:	50,382,576	22,391,194	44.44%	27,991,381	55.56%	2,660,266	18.94				

Fiscal Year Ended June 30, 1996

MONTH	TOTAL AGR	TABLE AGR	TABLE % OF TOTAL AGR	SLOT AGR	SLOT % OF TOTAL AGR	ADMISSIONS	WIN PER ADMISSION	DAILY WIN PER TABLE	DAILY WIN PER SLOT	DAILY WIN PER POSITION	DAILY WIN PER SQ FOOT
Jul-95	6,655,736	2,036,877	30.60%	4,619,059	69.40%	359,315	18.52	925.34	109.88	133.35	3.07
Aug-95	6,902,419	2,248,331	32.57%	4,654,088	67.43%	354,493	19.47	1,021.50	110.47	138.04	3.18
Sep-95	6,465,755	1,937,487	29.97%	4,528,269	70.03%	332,730	19.43	909.62	111.15	133.70	3.08
Oct-95	6,293,618	1,927,209	30.62%	4,366,409	69.38%	310,350	20.28	863.44	99.19	121.35	2.90
Nov-95	5,679,370	1,733,302	30.52%	3,946,068	69.48%	279,353	20.33	802.45	96.72	117.29	2.70
Dec-95	5,728,799	1,749,022	30.53%	3,979,777	69.47%	290,000	19.75	783.61	90.79	111.12	2.84
Jan-96	5,265,155	1,548,791	29.38%	3,716,364	70.62%	263,177	20.01	693.01	84.83	102.13	2.51
Feb-96	6,046,134	1,883,484	27.84%	4,362,650	72.16%	306,771	19.71	806.27	110.19	125.37	2.98
Mar-96	6,948,426	1,844,709	26.55%	5,103,718	73.45%	350,550	19.82	826.48	118.43	134.78	3.20
Apr-96	6,000,213	1,735,343	28.92%	4,264,871	71.08%	298,476	20.10	850.66	124.92	138.85	3.45
-May-96	4,444,151	1,184,350	26.65%	3,259,802	73.35%	232,081	19.15	561.84	95.57	102.91	2.47
-Jun-96	3,606,348	935,605	25.94%	2,670,743	74.06%	206,335	17.48	458.63	78.30	86.30	2.07
TOTALS:	70,036,124	20,562,307	29.36%	49,473,816	70.64%	3,583,631	19.54				

Fiscal Year 1997 (July thru December 1996)

MONTH	TOTAL AGR	TABLE AGR	TABLE % OF TOTAL AGR	SLOT AGR	SLOT % OF TOTAL AGR	ADMISSIONS	WIN PER ADMISSION	DAILY WIN PER TABLE	DAILY WIN PER SLOT	DAILY WIN PER POSITION	DAILY WIN PER SQ FOOT
Jul-96	5,241,039	1,275,485	24.34%	3,965,554	75.66%	282,886	18.53	625.24	118.26	125.41	3.01
Aug-96	5,627,312	1,501,803	26.89%	4,125,509	73.11%	310,645	18.11	736.18	120.95	134.66	3.23
Sep-96	5,353,045	1,314,607	24.56%	4,038,436	75.44%	314,457	17.02	644.42	118.39	128.09	3.08
Oct-96	5,658,075	1,460,882	25.82%	4,197,193	74.18%	300,722	18.81	716.12	123.05	135.39	3.25
Nov-96	5,557,438	1,447,383	26.05%	4,110,056	73.95%	390,317	14.24	709.50	120.49	132.98	3.19
Dec-96	5,412,788	1,356,779	25.07%	4,056,009	74.93%	279,892	19.34	665.09	118.91	129.52	3.11
TOTALS:	32,849,896	8,356,937	25.44%	24,492,959	74.56%	1,878,919	17.48				

GRAND

TOTALS:	153,268,395	51,310,438	33.48%	101,957,957	66.52%	8,122,816	18.87				
---------	-------------	------------	--------	-------------	--------	-----------	-------	--	--	--	--

- .. December 1994 figure reflect the first month of operations with 18 galvanized slot machines
- Operations were shut down May 18 and 11, 1996 and June 1 thru 7, 1998 due to flooding on the Mississippi River

ST. CHARLES RIVERFRONT STATION  
PERFORMANCE SUMMARY  
Fiscal year ended June 30, 1995

MONTH	TOTAL AGR	TABLE AGR	TABLE % OF TOTAL AGR	SLOT AGR	SLOT % OF TOTAL AGR	ADMISSIONS	WIN PER ADMISSION	DAILY WIN PER TABLE	DAILY WIN PER SLOT	DAILY WIN PER POSITION	DAILY WIN PER SQ FOOT
Aug-94	2,532,013	1,553,910	61.37%	978,103	38.63%	101,583	24.93	737.15	48.991	85.08	3.40
Sep-94	2,952,462	1,741,073	58.97%	1,211,389	41.03%	124,559	23.70	853.47	60.68	102.52	4.10
Oct-94	3,544,576	2,105,013	59.39%	1,439,563	40.61%	159,403	22.24	998.58	72.11	119.11	4.76
Nov-94	4,015,547	2,493,408	62.09%	1,522,139	37.91%	189,798	21.16	1,222.26	76.241	139.43	5.58
*Dec-94	7,180,927	2,981,408	41.52%	4,199,519	58.48%	322,567	22.26	1,414.33	141.111	241.29	9.65
Jan-95	9,776,943	3,776,548	38.63%	6,000,394	61.37%	460,944	21.21	1,282.36	115.56	154.07	6.71
Feb-95	9,763,184	3,648,031	37.37%	6,115,153	62.63%	433,639	22.51	1,302.87	136.07	173.56	7.42
Mar-95	10,304,905	3,803,875	36.91%	6,501,230	63.09%	438,813	23.48	1,226.99	130.66	183.19	7.07
Apr-95	11,107,235	3,913,418	35.23%	7,193,817	64.77%	457,914	24.26	1,254.30	117.20	175.04	7.88
**May-95	6,025,098	2,103,138	34.91%	3,921,960	65.09%	245,870	24.51	1,348.17	155.63	191.55	8.55
**Jun-95	7,727,469	2,849,776	36.88%	4,877,693	63.12%	321,584	24.03	1,304.84	139.00	176.23	7.83
TOTALS:	74,930,359	30,969,399	41.33%	43,960,960	58.67%	3,256,672	23.01				

Fiscal Year Ended June 30, 1996

MONTH	TOTAL AGR	TABLE AGR	TABLE % OF TOTAL AGR	SLOT AGR	SLOT % OF TOTAL AGR	ADMISSIONS	WIN PER ADMISSION	DAILY WIN PER TABLE	DAILY WIN PER SLOT	DAILY WIN PER POSITION	DAILY WIN PER SQ FOOT
Ju.J.95	9,730,086	3,384,155	34.78%	6,345,931	65.22%	440,462	22.09	1,049.68	123.62	220.43	6.68
Aug-95	10,330,991	3,441,696	33.31%	6,889,295	66.69%	467,024	22.12	1,067.52	131.66	158.39	7.09
Sep-95	11,102,935	3,688,246	33.22%	7,414,689	66.78%	500,288	22.19	1,182.13	146.42	175.90	7.87
Qd. 95	10,869,615	3,743,484	34.44%	7,126,131	65.56%	454,503	23.92	1,161.13	136.10	166.57	7.46
Nov-95	11,066,912	3,926,339	35.48%	7,140,573	64.52%	451,897	24.49	1,258.44	139.36	173.84	7.85
Dec-95	11,215,389	3,986,831	35.55%	7,228,558	64.45%	456,191	24.58	1,236.61	136.36	170.33	7.70
Jan-98	10,430,817	3,446,978	33.05%	6,983,839	66.95%	428,435	24.35	1,069.16	131.75	158.42	7.16
Feb-96	11,466,121	3,356,023	29.27%	8,110,098	70.73%	478,862	23.94	1,112.74	162.50	185.28	8.41
Mar-98	12,419,412	3,875,089	29.59%	8,744,323	70.41%	526,589	23.58	1,139.92	163.90	187.73	8.52
Apr-98	11,326,274	3,411,602	30.12%	7,914,672	69.88%	479,712	23.61	1,093.46	153.30	176.92	8.03
May-98	12,138,328	3,569,995	29.41%	8,568,333	70.59%	522,070	23.25	1,107.32	160.42	183.31	8.33
Jun-96	13,233,564	3,260,849	24.64%	9,972,715	75.36%	586,888	22.55	1,045.14	192.26	199.39	9.39
TOTALS:	135,330,444	42,891,287	31.69%	92,439,157	68.31%	5,792,921	23.36				

Fiscal Year 1991 (July thru December 1996)

MONTH	TOTAL AGR	TABLE AGR	TABLE % OF TOTAL AGR	SLOT AGR	SLOT % OF TOTAL AGR	ADMISSIONS	WIN PER ADMISSION	DAILY WIN PER TABLE	DAILY WIN PER SLOT	DAILY WIN PER POSITION	DAILY WIN PER SQ FOOT
Jul-96	13,010,409	3,425,884	26.33%	9,584,525	73.67%	574,468	22.65	1,098.04	184.78	196.03	9.23
Aug-96	13,122,229	3,632,638	27.68%	9,489,591	72.32%	576,197	22.77	1,164.31	182.95	197.71	9.31
Sep-98	11,895,764	3,150,053	26.48%	8,745,711	73.52%	520,291	22.86	1,009.63	168.61	179.23	8.44
Oct-96	11,473,610	3,189,672	27.80%	8,283,938	72.20%	526,219	21.80	1,022.33	159.71	172.87	8.14
Nov-96	12,049,098	3,440,662	28.56%	8,608,436	71.44%	535,578	22.50	1,102.78	165.96	181.54	8.55
Dec-96	11,804,706	3,182,469	26.96%	8,622,237	73.04%	537,787	21.95	1,020.02	166.23	177.86	8.37
TOTALS:	73,355,816	20,021,378	27.29%	53,334,438	72.71%	3,270,540	22.43				

GRAND

TOTALS:	293,616,620	93,882,064	33.10%	189,734,556	66.90%	12,320,133	23.02				
---------	-------------	------------	--------	-------------	--------	------------	-------	--	--	--	--

\* December 11 N Igu,es Nlect IhetIm month of operatIOM wIh IeplInd slot machines  
.. Operallons .. ,hut down Ilay 18 Uvu 11aJ 31, 1191 and Ju N 1 thru B.1115 d to flooding on tha IINourI River



**ST. JO FRONTIER CASINO**  
**PERFORMANCE SUMMARY**  
**Fiscal year ended June 30, 1995**

MONTH	TOTAL AGR	TABLE AGR	TABLE % OF TOTAL AGR	SLOT AGR	SLOT % OF TOTAL AGR	ADMISSIONS	WIN PER ADMISSION	DAILY WIN PER TABLE	DAILY WIN PER SLOT	DAILY WIN PER POSITION	DAILY WIN PER SQ FOOT
Aug-94	1,351,236	767,746	56.82%	583,490	43.18%	61,349	22.03	1,031.92	78.43	125.98	4.53
Sep-94	1,305,770	690,217	52.86%	615,553	47.14%	56,438	23.14	958.63	85.49	125.80	4.52
Oct-94	1,239,298	748,955	60.43%	490,344	39.57%	50,893	24.35	1,006.66	65.91	115.54	4.16
Nov-94	1,035,940	643,498	62.12%	392,442	37.88%	44,836	23.11	893.75	54.51	99.80	3.59
*Dec-94	1,677,395	744,593	44.39%	932,802	55.61%	65,162	25.74	1,091.78	93.74	131.02	5.62
Jan-95	1,642,390	647,718	39.44%	994,671	60.56%	66,449	24.72	949.73	99.96	128.28	5.51
Feb-95	1,711,035	641,008	37.46%	1,070,027	62.54%	67,242	25.45	1,040.60	119.05	147.96	6.35
Mar-95	1,956,960	793,170	40.53%	1,163,790	59.47%	72,399	27.03	1,163.01	116.95	152.85	6.56
Apr-95	1,951,345	709,015	36.33%	1,242,330	63.67%	72,180	27.03	1,181.69	124.36	157.11	6.76
May-95	1,969,610	612,030	31.07%	1,357,580	68.93%	74,819	26.32	987.14	135.89	158.58	6.60
Jun-95	1,750,908	510,285	29.14%	1,240,623	70.86%	69,275	25.27	850.48	121.27	140.30	6.07
<b>TOTALS:</b>	<b>17,591,887</b>	<b>7,508,234</b>	<b>42.68%</b>	<b>10,083,653</b>	<b>57.32%</b>	<b>701,042</b>	<b>25.09</b>				

**Fiscal Year Ended June 30, 1996**

MONTH	TOTAL AGR	TABLE AGR	TABLE % OF TOTAL AGR	SLOT AGR	SLOT % OF TOTAL AGR	ADMISSIONS	WIN PER ADMISSION	DAILY WIN PER TABLE	DAILY WIN PER SLOT	DAILY WIN PER POSITION	DAILY WIN PER SQ FOOT
Jul-95	1,965,365	550,747	28.02%	1,414,617	71.98%	79,070	24.86	935.06	130.75	151.31	6.59
Aug-95	2,068,104	602,677	29.14%	1,465,427	70.86%	77,652	26.63	1,023.22	135.45	159.22	6.93
Sep-95	1,960,137	562,600	28.70%	1,397,537	71.30%	73,864	26.54	987.02	133.48	155.94	6.79
Oct-95	1,830,524	543,398	29.69%	1,287,126	70.31%	66,296	27.61	973.83	118.97	142.63	6.14
Nov-95	1,800,448	617,730	34.31%	1,182,718	65.69%	64,298	28.00	1,143.94	112.96	144.96	6.24
Dec-95	1,852,255	557,290	30.09%	1,294,966	69.91%	67,772	27.33	998.73	119.69	144.32	6.21
Jan-96	1,633,473	547,436	33.51%	1,086,038	66.49%	61,017	26.77	981.07	100.38	127.28	5.48
Feb-96	1,776,841	474,307	26.69%	1,302,534	73.31%	71,060	25.00	908.63	128.70	148.00	6.37
Mar-96	2,082,362	611,353	29.36%	1,471,010	70.64%	78,313	26.59	1,095.61	135.97	162.25	6.98
Apr-96	1,837,256	483,278	26.30%	1,353,978	73.70%	67,913	27.05	894.96	129.32	147.93	6.37
May-96	1,838,296	493,741	26.86%	1,344,556	73.14%	70,746	25.98	884.84	124.28	143.24	6.16
Jun-96	1,541,847	377,745	24.50%	1,164,102	75.50%	62,752	24.57	699.53	111.18	124.14	5.34
<b>TOTALS:</b>	<b>22,186,908</b>	<b>6,422,300</b>	<b>28.95%</b>	<b>15,764,608</b>	<b>71.05%</b>	<b>840,753</b>	<b>26.39</b>				

**Fiscal Year 1997 (July thru December 1996)**

MONTH	TOTAL AGR	TABLE AGR	TABLE % OF TOTAL AGR	SLOT AGR	SLOT % OF TOTAL AGR	ADMISSIONS	WIN PER ADMISSION	DAILY WIN PER TABLE	DAILY WIN PER SLOT	DAILY WIN PER POSITION	DAILY WIN PER SQ FOOT
Jul-96	1,608,044	433,179	26.94%	1,174,865	73.06%	67,391	23.86	802.18	112.21	129.47	5.57
Aug-96	1,644,434	411,765	25.04%	1,232,669	74.96%	70,073	23.47	762.53	117.73	132.40	5.70
Sep-96	1,671,597	444,675	26.60%	1,226,922	73.40%	66,247	25.23	823.47	117.18	134.59	5.79
Oct-96	1,573,945	329,489	20.93%	1,244,456	79.07%	67,537	23.30	610.17	118.86	126.73	5.45
Nov-96	1,501,775	398,194	26.51%	1,103,582	73.49%	61,427	24.45	737.40	105.40	120.92	5.20
Dec-96	1,543,255	413,620	26.80%	1,129,635	73.20%	61,959	24.91	765.96	107.89	124.26	5.35
<b>TOTALS:</b>	<b>9,543,090</b>	<b>2,430,921</b>	<b>25.47%</b>	<b>7,112,129</b>	<b>74.53%</b>	<b>394,634</b>	<b>24.18</b>				

**GRAND**

<b>TOTALS:</b>	<b>49,321,845</b>	<b>16,361,455</b>	<b>33.17%</b>	<b>32,960,390</b>	<b>66.83%</b>	<b>1,936,429</b>	<b>25.12</b>				
----------------	-------------------	-------------------	---------------	-------------------	---------------	------------------	--------------	--	--	--	--

• December 1994 figuree reflect the ftn,t month of operations with legalized slot machines

**SAMS TOWN KANSAS CITY**  
**PERFORMANCE SUMMARY**  
**Fiscal year ended June 30, 1996**

MONTH	TOTAL AGR	TABLE AGR	TABLE % OF TOTAL AGR	SLOT AGR	SLOT % OF TOTAL AGR	ADMISSIONS	WIN PER ADMISSION	DAILY WIN PER TABLE	DAILY WIN PER SLOT	DAILY WIN PER POSITION	DAILY WIN PER SQ FOOT
*Sep-95	3,932,981	1,131,170	28.76%	2,801,810	71.24%	161,426	24.36	1,122.19	162.65	182.081	7.80
Oct-95	5,847,163	1,990,066	34.03%	3,857,097	65.97%	294,213	19.87	1,126.24	124.42	152.73	6.74
Nov-95	5,211,425	1,959,245	37.60%	3,252,181	62.40%	207,776	25.08	989.52	108.73	135.40	6.20
Dec-95	4,987,002	1,796,034	36.01%	3,190,969	63.99%	227,438	21.93	627.67	111.76	130.90	5.75
Jan-96	4,967,984	1,754,743	35.32%	3,213,241	64.68%	213,537	23.27	808.64	112.67	130.50	5.72
Feb-96	6,685,796	1,903,623	28.47%	4,782,174	71.53%	338,927	19.73	937.75	169.13	180.39	8.23
Mar-96	7,370,796	2,343,721	31.80%	5,027,075	68.20%	388,316	18.98	1,095.71	165.81	187.22	8.49
Apr-96	6,214,532	2,001,387	32.20%	4,213,145	67.80%	333,820	18.62	1,026.35	138.91	161.84	7.40
May-96	6,004,127	1,718,824	28.63%	4,285,303	71.37%	329,676	18.21	853.01	135.92	150.72	6.92
Jun-96	5,618,826	1,562,401	27.81%	4,056,425	72.19%	354,425	15.85	801.23	136.44	148.41	6.69
<b>TOTALS:</b>	<b>56,840,633</b>	<b>18,612,133</b>	<b>31.95%</b>	<b>38,679,419</b>	<b>68.05%</b>	<b>2,849,554</b>	<b>19.95</b>				

**Fiscal Year 1997 (July thru December)**

MONTH	TOTAL AGR	TABLE AGR	TABLE % OF TOTAL AGR	SLOT AGR	SLOT % OF TOTAL AGR	ADMISSIONS	WIN PER ADMISSION	DAILY WIN PER TABLE	DAILY WIN PER SLOT	DAILY WIN PER POSITION	DAILY WIN PER SQ FOOT
Jul-96	5,378,168	1,419,286	26.39%	3,958,883	73.61%	324,618	16.57	727.84	133.16	142.05	6.40
Aug-96	6,046,466	1,788,327	29.58%	4,258,139	70.42%	287,555	21.03	917.09	143.23	159.71	7.20
Sep-96	4,715,996	1,537,891	32.61%	3,178,106	67.39%	266,180	17.59	766.66	106.90	124.56	5.61
Oct-96	5,223,606	1,456,335	27.88%	3,767,271	72.12%	246,639	21.18	746.84	126.72	137.97	6.22
Nov-96	4,470,486	1,298,341	29.04%	3,172,145	70.96%	200,616	22.28	665.82	106.70	118.08	5.32
Dec-96	4,374,596	1,371,924	31.36%	3,002,672	68.64%	187,013	23.39	703.55	101.00	115.55	5.21
<b>TOTALS:</b>	<b>30,209,319</b>	<b>8,872,103</b>	<b>29.37%</b>	<b>21,337,216</b>	<b>70.63%</b>	<b>1,514,621</b>	<b>19.95</b>				


GRAND

<b>TOTALS:</b>	4,364,175	19.95									
----------------	-----------	-------	--	--	--	--	--	--	--	--	--

• Sams Town - Kansas City began operations, September 13, 1995



MISSOURI GAMING COMMISSION  
MONTHLY SUMMARY OF ADMISSIONS FEES BY OPERATOR  
FISCAL YEAR ENDED JUNE 30, 1995

MONTH	ARGOSY	AZTAR	BOYD	HARRAHS	PRESIDENT	ST. CHARLES	ST. JO	STATE TOTAL
Jul-94	349,374.00				337,348.00	247,960.00	122,586.00	1,057,268.00
Aug-94	363,926.00				349,952.00	203,166.00	122,698.00	1,039,742.00
Sep-94	355,270.00			81,690.00	367,974.00	249,118.00	112,876.00	1,166,928.00
Oct-94	273,226.00			367,684.00	364,468.00	318,806.00	101,786.00	1,425,970.00
Nov-94	266,660.00			472,466.00	337,960.00	379,592.00	as:12.00	1,546,350.00
Dec-94	369,052.00			637,228.00	714,962.00	645,134.00	130,324.00	2,496,700.00
Jan-95	453,868.00			730,866.00	666,770.00	921,888.00	132,898.00	2,906,290.00
Feb-95	489,762.00			684,932.00	654,602.00	867,278.00	134,484.00	2,831,058.00
Mar-95	506,898.00			772,430.00	736,110.00	877,626.00	144,798.00	3,037,862.00
Apr-95	478,090.00	16,184.00		796,170.00	701,508.00	915,828.00	144,360.00	3,052,140.00
May-95	518,090.00	107,054.00		836,990.00	197,798.00	491,140.00	149,638.00	2,301,310.00
Jun-95	488,432.00	99,320.00		827,346.00	228,428.00	643,168.00	138,550.00	2,425,244.00
MIAL	4,912,648.00	222,558.00	0.00	6,207,802.00	5,657,880.00	6,161,300.00	1,524,670.00	25,286,862.00

FISCAL YEAR ENDED JUNE 30, 1996

MONTH	ARGOSY	AZTAR	BOYD	HARRAHS	PRESIDENT	ST. CHARLES	ST. JO	STATE TOTAL
Jul-95	559,920.00	137,272.00		923,474.00	718,630.00	880,924.00	158,140.00	3,378,360.00
Aug-95	581,456.00	150,106.00		933,544.00	708,986.00	934,000.00	155,004.00	3,444,000.00
Sep-95	532,400.00	146,548.00	322,as2.00	so1,2aU iti	665,460.00	1,000,760.00	447,420.00	3,444,000.00
Oct-95	002,2sa.00	12s,944.00	sa5.42s.00	so2,J10.00	s20,100.00	909,006.00	132,592.00	3,681,236.00
Nov-95	493,638.00	10s,388.00	4,15,552.00	743,360.00	558,706.00	903,794.00	128,596.00	3,352,038.00
Dec-95	s1s,11a.00	112,sse.0.00	1,454.00	743,000.00	sao,000.00	e12,3a2.00	13=5,544.00	3,454,568.00
Jan-96	513,896.00	109,260.00	427,074.00	708,006.00	526,354.00	fif3,870.00	122,034.00	3,263,494.00
Feb-96	50,986.00	131,240.00	677,854.00	780,452.00	613,542.00	957,724.00	142,120.00	3,952,938.00
Mar-96	715,784.00	185,118.00	776,632.00	861,162.00	701,100.00	1,053,178.00	156,626.00	4,449,600.00
Apr-96	660,198.00	137,526.00	667,640.00	190,200.00	596,952.00	959,424.00	435,826.00	3,947,772.00
May-96	a12,sao.00	12s,33a.00	as9,352.00	1,1ss4760.00	464,1a2.00	1,704,148.00	41,192.00	4,348,216.00
Jun-96	ti58,100.00	124,574.00	70a,s50.00	1,244,742.00	412,670.00	J,173,776.00	125,504.00	4,348,216.00
MIAL	e,89sa3a.00	1,SSS 100.00	5,699,108.00	16,701,774.00	12,825,142.00	18,347,146.00	3,206,176.00	70,404,990.00

GRAND TOTALS: 11,807,986.00 1,817,658.00 5,699,108.00 16,701,774.00 12,825,142.00 18,347,146.00 3,206,176.00 70,404,990.00

**MISSOURI GAMING COMMISSION**  
**MONTHLY SUMMARY OF GAMING TAX BY OPERATOR**  
**FISCAL YEAR ENDED JUNE 30, 1995**

	ARGOS	WAR	Lap	HARB.A.HS.	1-2-3-4-5-6-7-8-9-10-11-12	thies	+	STATE
Jul-94	877,389.57				589,975.72	583,026.30	224,505.38	2,274,896.97
Aug-94	1,073,372.38				566,368.10	506,402.55	270,247.21	2,416,390.25
Sep-94	1,113,959.28			225,208.02	643,444.40	500,492.45	261,153.96	2,834,258.11
Oct-94	868,012.85			1,077,665.84	656,896.60	708,915.22	247,859.65	3,559,350.16
Nov-94	803,810.13			(296,030.12)	621,793.3	803,109.33	207,187.99	3,731,930.80
Dec-94	1,014,417.11			1,630,323.60	1,382,487.64	1,436,185.37	335,478.99	5,798,892.77
Jan-95	1,329,210.75			1,948,497.41	1,315,694.66	1,955,388.69	328,477.94	6,877,269.45
Feb-95	1,412,057.57			1,934,600.11	1,337,34(62)	1,952,636.84	342,207.02	6,978,843.16
Mar-95	1,455,454.93			2,242,872.20	1,391,809.39	2,060,980.95	391,392.00	7,542,509.47
Apr-95	1,496,990.95	53,224.60		2,302,582.34	1,308,426.86	2,221,447.00	390,269.03	1,940.77
May-95	1,474,156.01	308,410.10		2,321,805.16	392,545.72	1,205,019.68	393,921.97	6,095,658.70
Jun-95	1,395,872.51	299,565.55		2,231,302.67	459,700.93	1,545,493.81	350,181.58	6,282,123.05
mm	14,314,704.17	661,200.25	0.00	17,210,687.7	11,490.87	15,569,098.19	3,742,882.72	62,165,063.67

**FISCAL YEAR ENDED JUNE 30, 1996**

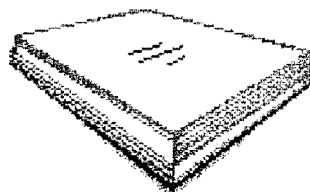
	WAR V	kr-A	javr	HARB.A.HS.	IDENT	ST 9u 1: S ii	ST JO	STAL: IP-t#
JUL-95	1,503,591.49	412,066.80		2,525,451.50	1,331,147.21	1,946,017.15	393,072.92	8,111,347.07
Aug-95	1,562,645.28	410,621.02		2,529,786.05	1,380,483.72	2,066,1	413,62CLZ0	8,363,354.97
Sep-95	1,480,305.18	410,406.95	786,596.12	2,326,295.36	1,293,151.05	2,220,586.98	392,027.43	8,909,369.07
Oct-95	1,438,456.73	373,083.85	1,169,432.58	2,308,266.11	1,258,723.51	2,173,922.93	366,104.89	9,087,990.60
Nov-95	1,354,338.04	347,891.75	1,042,285.06	1,119,617.54	1,135,873.92	2,213,382.42	360,089.55	8,653,478.28
Dec-95	1,382,488.80	369,164.80	997,400.50	2,136,515.58	1,145,759.84	2,243,077.81	370,451.09	8,644,858.42
Jan-96	1,290,651.98	318,996.35	993,596.74	2,085,360.06	1,053,031.08	2,086,163.45	326,6M:33	8,154,494.29
Feb-96	1,477,803.84	406,422.25	1,337,159.28	2,251,764.91	1,209,226.71	2,293,224.19	355,368.28	9,330,969.46
Mar-96	1,672,685.87	506,423.05	1,474,159.25	2,333,076.67	1,389,685.25	2,483,88f37	416,472.46	11,276,384.92
Apr-96	1,608,997.09	412,027.15	1,242,90(f43)	2,129,414.61	1,200,042.68	2,265,254.87	367,451.15	9,226,093.98
May-96	1,449,392.00	409,783.80	1,200,825.44	2,100,817.80	888,830.26	2,427,665.63	367,659.21	9,453,911.1i
Jun-96	1,319,640.21	381,569.00	1,123,76ff13	2,763,157.07	721,269.50	2,846,712.84	308,369.35	9,264,483.71
mIAL	17,540,996.52	4,758,457.37	11,36@1,2,53	8,291,523.26	14,007,224.74	27,066,088.84	4,437,381.67	107,476,798.92

GRAND TOTALS: 31,855,700.69 5,419,657.62 11,368,126.53 45,509,210.73 24,673,715.61 42,635,187.03 8,180,284.39 169,641,862.59

# Appendix B

---

## **Summary of National Gaming Policies**



# US GAMING AT A GLANCE

	Charitable bingo	Charitable games	Card rooms	Casinos	Gaming devices	Sports wagering	Video lottery terminals	Keno	Instant & pulltab games	Lotto	Numbers	Passives	Ory- hound	Jai alai	Harness	Quarter horse	Thorough- bred	Interstate Inter-track wagering	Intrastate Inter-track wagering	Off- track betting	Telephone betting
Alabama	0	0											0		♦	●	●	♦			
Alaska	0	0																			
Arizona	0	0		0	0				0	0			0			0	0	0	0	0	
Arkansas												●	0			♦	0	0			
California	0	0	0					●	0	0	0	●			0	0	0	0	0	0	
Colorado	0	0	0	0	0			0	0	0		●	0			0	0	0	0		
Connecticut	0	0		0	0	●	●		0	0	0	●	0	0	♦	●	●	0	0	0	0
Delaware	0	0							0	0	0	●			0	●	0	0			
Florida	0	0	♦						0	0	0		0	0	0	●	0	0	0		
Georgia	0								0	0	0										
Hawaii													●								
Idaho	⊗	0		0				●	0	0		●				0	0	0	0		
Illinois	⊗	0	⊗	⊗	⊗			●	⊗	0	0	●			0	0	0	0	0	0	
Indiana	⊗	⊗		♦	♦				⊗	⊗	⊗				⊗	0	⊗	⊗	♦	⊗	
Iowa	0	0	0	0	0				0	0			0		0	0	0	0	0		
Kansas	0	0						0	0	0	0		0		●	0	0	0	0		
Kentucky	0	0							0	0	0				0	0	0	0	0	0	■
Louisiana	0	0		0	0				0	0	0	●			0	0	●	0	0	0	
Maine	0	0							0	0	0	●			0		●	0		0	
Maryland	0	0	0		0			0	0	0	0	●			0	●	0	0	0	0	●
Massachusetts	0	0						0	0	0	0	●	0		0	●	0	0	0		
Michigan	0	0		0	0			0	0	0	0	●			0	0	0	0			
Minnesota	0	0	0	0	0				0	0	0				0	0	0	0	♦		
Mississippi	0	0		0	0										●	●	●	●		●	
Missouri	0	0		0	0				0	0	0			●	●	●	●	●	♦	●	
Montana	0	0	0	0	0	0		0	0	0				●	0	0	0	0	0		
Nebraska	0	0						0	0	0			●	●	●	0	0	0	0		
Nevada	0		0	0	0	0		0					●	●	●	0	0			0	0
New Hampshire	0	0							0	0	0	●	0		0		0	0	0		
New Jersey	0	0	0	0	0				0	0	0	●			0		0	0	0	0	
New Mexico	0	0		0	0				●			●				0	0	0	0		
New York	0	0		0				0	0	0	0	●			0	●	0	0	0	0	0
North Carolina	0																				
North Dakota	0	0	0	0	0	0						●			0	0	0	0	●	0	
Ohio	0	0							0	0	0	●			0	0	0	0	0	♦	
Oklahoma	0	0													●	0	0	0	0	●	
Oregon	0	0	0	0	0	0	0	0	0	0	0	●	0			0	0	0	0	0	
Pennsylvania	0	0						0	0	0	0	●			0	●	0	0	0	0	0
Rhode Island	0	0					0	0	0	0	0	●	0	0	●		●	0			

## US GAMING AT A GLANCE

[illegible]

# MISSOURI GAMING COMMISSION

## SURVEY OF GAMING TAXES, REVENUES AND REGULATIONS

Jurisdiction	Casino Type	No. of Licenses	Gaming Tax Rate	Other Taxes & Fees	Admission Fee	Loss Limits	Gaming Limits	1995 Calendar Year Gaming Revenue
Nevada	Landbased	Current: 416 unrestricted; 1,879 restricted/Unlimited	Monthly on gross gaming revenue: 3% for first \$50K; 4% of the next \$84K; 6.25% exceeding 134K/effective tax rate to unrestricted licensees 7.25%	Slot license fee of \$250 per year				\$7,368,580,000
New Jersey	Landbased	Current 13/Unlimited	8% on gross gaming revenue	\$500 per year per slot machine; investment alternative tax, 1.25% of net gross revenues				\$3,748,576,000
Louisiana	Cruise/Landbased	14 Riverboat & 1 Landbased/Limit 15 riverboats	18.5% of net gaming proceeds or \$100,000 per year whichever is greater		\$2.50 - \$3.50 per admission optional in local jurisdictions			\$340,899,209
Mississippi	Dockside	Current 29/Unlimited	8% state tax; 4% tax split between city and county where gaming is legal	Application Fee, \$5,000; Gaming Device tax \$100,000/yr				\$1,724,301,405
Iowa	Cruise/Dockside*	Current 12 (9 paramutual-slots only, 9 riverboats)/No limit	Annually on AGR: 5% for first \$1 MM; 10% of the next \$2MM; 20% exceeding \$3MM	Enforcement Cost @ 65% + Commission costs divided equally between boats on a weekly basis; Application fee \$40,000; Annual fee \$5 per passenger to capacity; Annual license fee \$1,000; occupational license & fingerprinting fees		Removed in 1994		\$455,935,892
Illinois	Cruise	Current 10/1 limit 10	20% of AGR	Various licensee and application fees ranging from \$50 to \$50,000	\$2 per admission fee.		No Poker Allowed	\$1,178,311,827
Missouri	Simulated Cruise**	Current 7/Unlimited***	20% of AGR	Boat to pay for full cost of enforcement. Avg. \$50,000 per month; various license and applications fees	\$2 per admission fee.	Loss limit 0(\$500 per 2 hour cruise		\$467,577,788
Indiana	Cruise/Simulated Cruise on Lake Michigan	Current 4/1 limit 11	20% of AGR		\$3 per person per cruise admission fee.			\$6,400,000
Colorado	Limited Stakes/1. and based	Current 61/Unlimited	Annually on AGR: 2% for first \$2MM; 8% for next \$2MM; 15% for next \$1 MM; 18% above \$5MM	State fee of \$75 per device, per year. Local fee of \$750-\$1,265 per device per year.			Bet limit of \$5 on slots, blackjack and poker only	\$348,342,946
South Dakota	Limited Stakes/1. and based	Current 116/Unlimited	8% of AGR	A \$2,000 per device, per year fee; various license, application and investigation fees			Bet limit of \$5	\$48,535,113

\* Required to cruise one cruise a day for 100 days during April - October.

- Presumption that boats cruise, but allows procedure for dockside if necessary to ensure safety of passengers. All boats dockside except Az Jr. in Caruthersville.

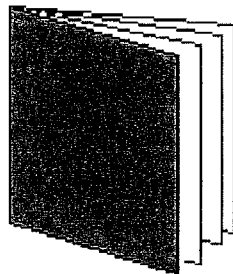
- When there is no riverboat licensing, legislation was successfully introduced in 1995 to limit the number of riverboats to nine.

- The gaming tax serves as a deterrent against state income tax.

# Appendix C

---

## **Gaming Commission Fiscal Report**



Gaming Commission Fund Balance Report  
Fiscal Year 1995

	AMOUNT	SUBTOTAL	TOTAL
BEGINNING BALANCE 7/1/94			\$2,524,062.33
<i>REVENUE</i>			
Fees:			
A & B Application	\$942,117.72		
Level I Occup. Application	\$50,700.00		
Level II Occup. Application	\$558,180.85		
Supplier Application	\$155,739.66		
Level II Occup. Annual Fee	\$367,982.01		
Supplier Annual Fee	\$20,000.00		
Penalties	\$225,000.00		
Level II Supplier Application	\$2,925.00		
Level II Supplier Annual Fee	\$1,100.00		
Admissions	\$12,608,260.00	\$14,932,005.24	
Licenses:			
A&B Annual	\$175,000.00		
Liquor License	\$4,000.00	\$179,000.00	
Other:			
Administrative Income	\$796,296.41		
Interest	\$260,240.42	\$1,056,536.83	
Total			\$16,167,542.07
<i>EXPENDITURE-GAMING</i>			
Personal Service:			
Gaming Salaries	\$779,505.57		
MSHP Salaries	\$2,254,137.40		
MSHP fringe Benefit	\$1,080,716.37		
Gaming Fringe Benefit	\$363,840.18	\$4,478,199.52	
Expense & Equipment			
Travel & Vehicle Exp.	\$172,879.00		
Office Equipment	\$68,954.00		

	AMOUNT	SUBTOTAL	TOTAL
<i>EXPENDITURE-GAMING (cont)</i>			
Office & Comm. Equip. Purchase	\$66,062.00		
Communications Expense	\$102,357.00		
Inst. & Phys. Plant Expense	\$187,366.00		
Inst. & Phys. Plant Equip. Purchase	\$49,221.00		
Data Processing Exp. & Equip.	\$160,263.00		
Professional Services	\$347,662.00		
Other Expense	\$155,444.00		
Refund Appropriation	\$9,315.00		
Debt Retirement	\$3,000,000.00		
Rounding Adjustment	\$2.00	\$4,319,525.00	
Total Gaming			\$8,797,724.52
<i>EXPENDITURE-OTHER</i>			
Personal Services:			
fx)R Salaries	\$14,025.22	\$14,025.22	
Expense & Equipment:			
MSHP Gasoline	\$102,059.24		
MSHP Auto Maintenance & Repair	\$55,246.88		
MSHP Automobiles	\$500,935.26		
Transfer to General Revenue (UPC)	\$13,471.00	\$671,712.38	
Total Other			\$685,737.60
<i>FVND BALANCE</i>			
Penalty Reserve	\$225,000.00		
Interest Through	\$8,098.24	\$233,098.24	\$233,098.24
<i>FUND BALANCE</i>			
<i>WILITIGATION</i>			
			<u>\$8,975,044.04</u>



**Gaming Commission Fund Balance Report**  
**Fiscal Year 1996 - As of 08-31-96**

	AMOUNT	SUBTOTAL	TOTAL
BEGINNING BALANCE 7/1/95			\$9,208,142.28
<i>REVENUE</i>			
Fees:			
A&B Application	\$1,073,907.66		
Level I Occup. Application	\$91,200.00		
Level II Occup. Application	\$526,650.00		
Supplier Application	\$88,007.49		
Level I Occup. Annual Fee	\$1,000.00		
Level II Occup. Annual Fee	\$652,623.99		
Supplier Annual Fee	\$40,000.00		
Penalties	\$7,349.60		
Level II Supplier Application	\$1,800.00		
Level II Supplier Annual Fee	\$1,036.86		
Admissions	\$22,297,394.00	\$24,780,069.60	
Licenses:			
A&B Annual	\$225,000.00		
Liquor License	\$5,500.00	\$230,500.00	
Other:			
Administrative Income	\$305,257.74		
Enforcement Reimbursements	\$6,155,156.78		
Interest	\$899,042.28		
Outlawed Check	\$9,999.00	\$7,369,455.80	
Total			\$41,589,067.68

**EXPENDITURE-GAMING**

Personal Service:			
Gaming Salaries	\$1,039,779.95		
MSHP Salaries	\$3,075,756.33*		
MSHP Fringe Benefit	\$1,448,504.05		
Gaming Fringe Benefit	\$509,292.28	\$6,073,332.61	
Expense & Equipment			
Travel & Vehicle Exp.	\$159,559.12		

	AMOUNT	SUBTOTAL	TOTAL
Office Equipment	\$53,708.54		
Office & Comm. Equip. Pur.	\$82,105.21		
Communications Expense	\$103,873.84		
Inst. & Phys. Plant Expense	\$46,567.50		
Inst & Phys. Plant Equip. Pur.	\$10,512.62		
Data Processing Exp. & Equip.	\$115,001.21		
Professional Services	\$613,952.32		
other Expense	\$19,015.62		
Refund Appropriation	\$314.50		
Lease Payment	\$168,941.04	\$1,373,551.52	
Total Gaming			\$34,142,183.55

**EXPENDITURE-OTHER**

Personal Services:			
DOR Salaries	\$21,876.00		
Attorney General Salaries	\$31,200.00		
Auditor's Office Salaries	\$28,850.97	\$81,926.97	
Expense & Equipment:			
MSHP Gasoline	\$116,133.00		
MSHP Auto Maintenance & Repair	\$84,188.72		
MSHP Vehicle Purchase	\$508,249.00		
Auditor's Office Expenses	\$2,221.42		
Div. of Youth Services	\$491,855.28		
Miscellaneous Transfers	\$8,421,958.97	\$9,624,606.39	
Total Other			\$9,706,533.36

**FUND BALANCE**

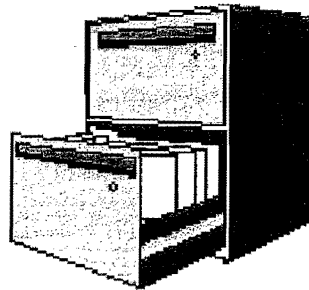
Penalty Reserve - From FY 96	\$7,349.60		
Interest Through 6-30-96 Est.	\$431.00		
Penalty Reserve - From FY95	\$225,000.00		
Interest Through 6-30-95 Est.	\$15,302.00	\$248,082.60	
<b>FINAL BALANCE/LITIGATION</b>			<u>\$24,187,567.59</u>

# Appendix D

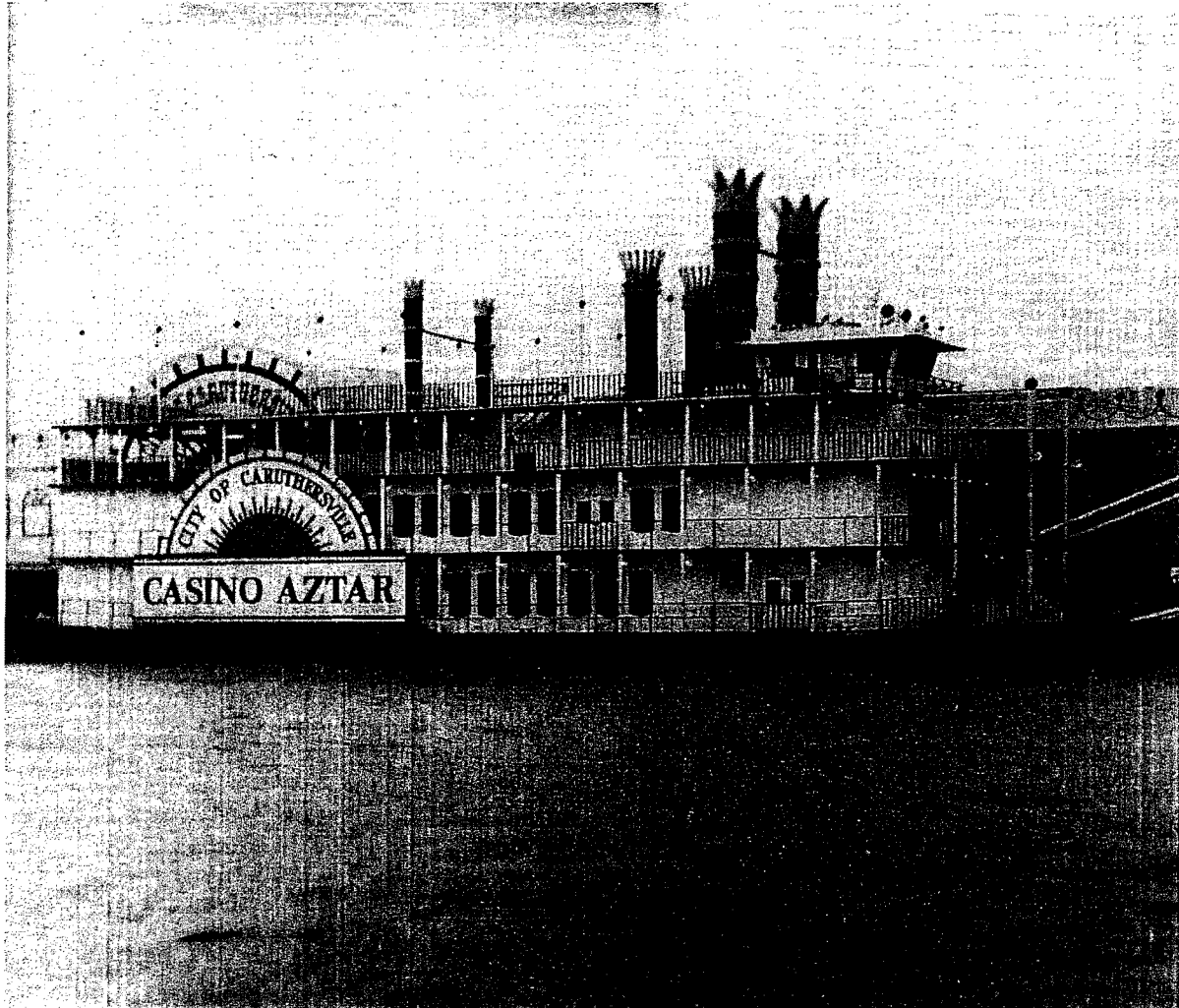
---

1996 1996 1996  
**Operator Summaries**  
1996 1996 1996  
1996 1996 1996

---



# Aztar Missouri Corporation



## Quick Facts:

License Date: April 27, 1995  
Total Gaming Positions: 541  
Gambling Space: 10,400  
Employees: 501

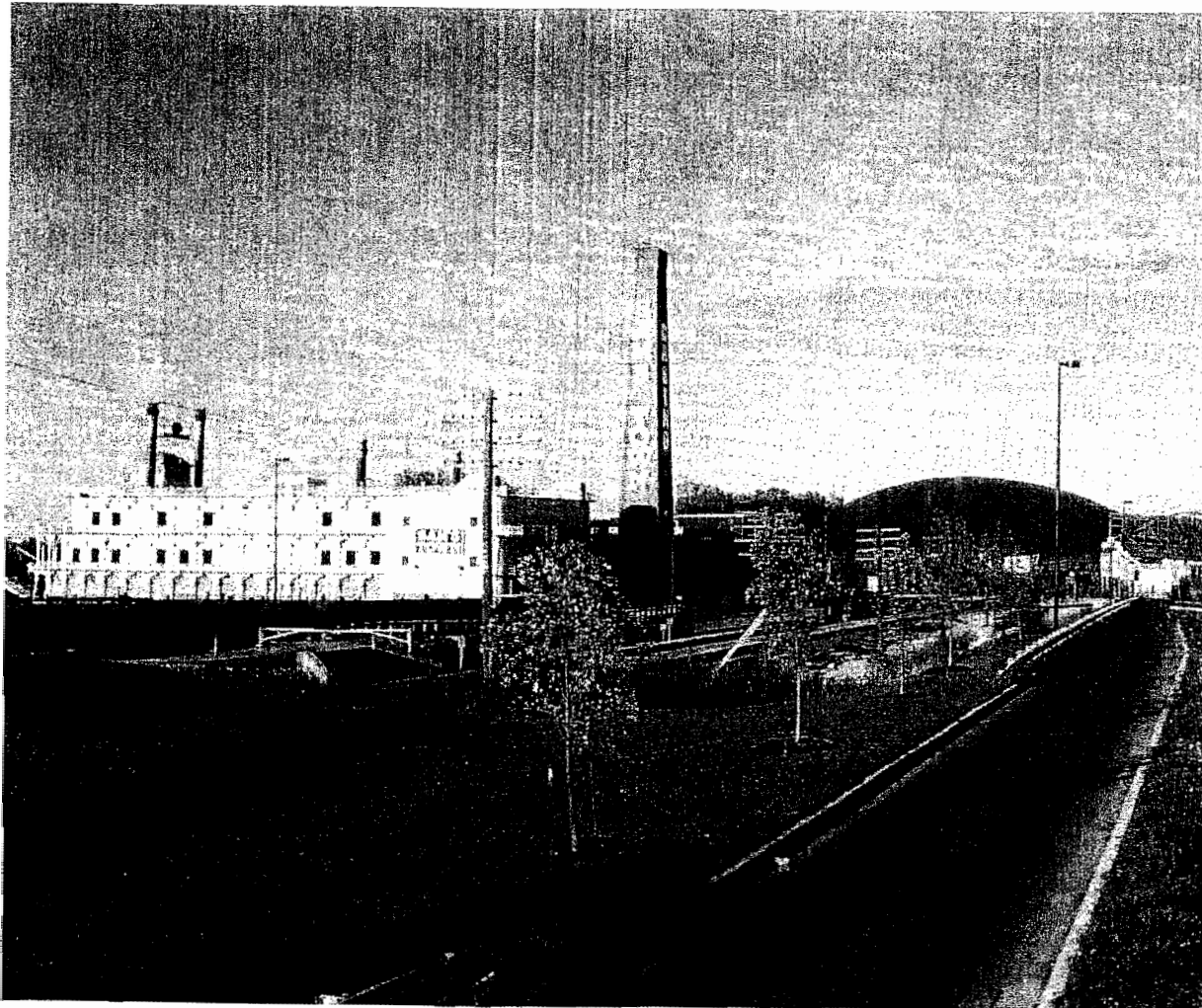
Casino Aztar  
777 East Third Street  
Caruthersville, Missouri 63830  
Tel. (314) 333-6000

Local Government:  
City of St. Caruthersville

## Quick Stats:

Admissions	797,550
Admissions Fees	\$1,595,100
Admission Fees	
State & Local Portion	\$797,550
Adjusted Gross Receipts	\$23,792,287
Gaming Tax	\$4,758,457
Estimated Project Cost	\$56,350,000
Gaming Tax	
Local Portion	\$475,846
State Portion	\$4,282,612
Table Games	27
Slot Machines	434

# Boyd Gaming Company "Sam's Town"



## Quick Facts:

License Date: September 13, 1995  
 Total Gaming Positions: 1,262  
 Gambling Space: 28,000  
 Employees: 1,361

Sam's Town Casino  
 6711 N.E. Birmingham  
 Kansas City, Missouri 64118  
 Tel: (816) 988-0711

Local Government:  
 City of Kansas City

## Quick Stats:

Admissions	2'849554
A4#its ioris es	.\$ {661} {10; .
clinks i911F1;t;s	>
sUtteJLocal.Po.rti n i	2849554
t:Ti	lle ipt . . . . .
Estmilt, f,r9JectCp	.\$ln:1 Li341
clming 1,1r	
L,ocal P6ttion	\$(ti6JHi
State 6ftfon	\$19,231,314
Jabie.Gaffles	.65
\$19t Mijchines	991

# Harrah's North Kansas City Corporation



## Quick Facts:

### License Dates:

North Star: September 22, 1994

Lucky Star: May 15, 1996

Total Gaming Positions: 2,306

Gambling Space: 61,600

Employees: 1,890

### Harrah's North Kansas City

One Riverboat Drive

North Kansas City, Missouri 64116

Tel: (816) 889-7078

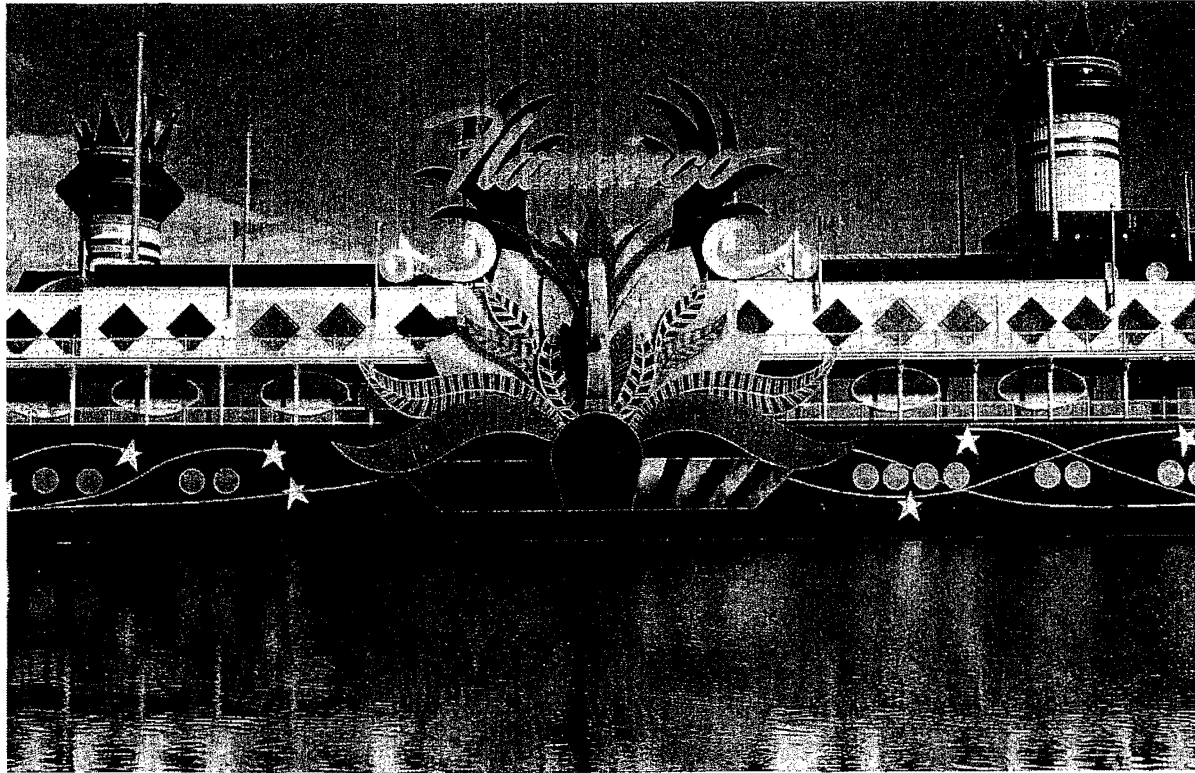
### Local Government:

City of North Kansas City

## Quick Stats:

Admissions	5,246,986
Admission Fees	\$10,493,972
Admission Fees	
State & Local Portion	\$5,246,986
Adjusted Gross Recdpts	\$141,492,616
Gaming Tax	\$28,798,521
Estimated Project Cost	\$142,700,000
Gaming Tax	
Local Portion	\$2,829,852
State Portion	\$25,468,671
Table Games	109
Slot Machines	1,890

# Hilton Kansas City Corporation



## Quick Facts:

License Date: October 1, 1996  
Total Gaming Positions: 1,223  
Gaming Space: 30,000  
Employees: 941

Flamingo Casino  
1800 E. Front Street  
Kansas City, Missouri 64120  
Tel: (816) 855-7777

Local Government:  
City of Kansas City

## Quick Stats:

Due to licensure date of this casino, complete data is not yet available.



# Kansas City Station Corporation



## Quick Facts:

Licence Date: January 18, 1997  
Total Gaming Positions: 3,816  
Gambling Space: 140,000 sq. ft.  
Employees: 3,216

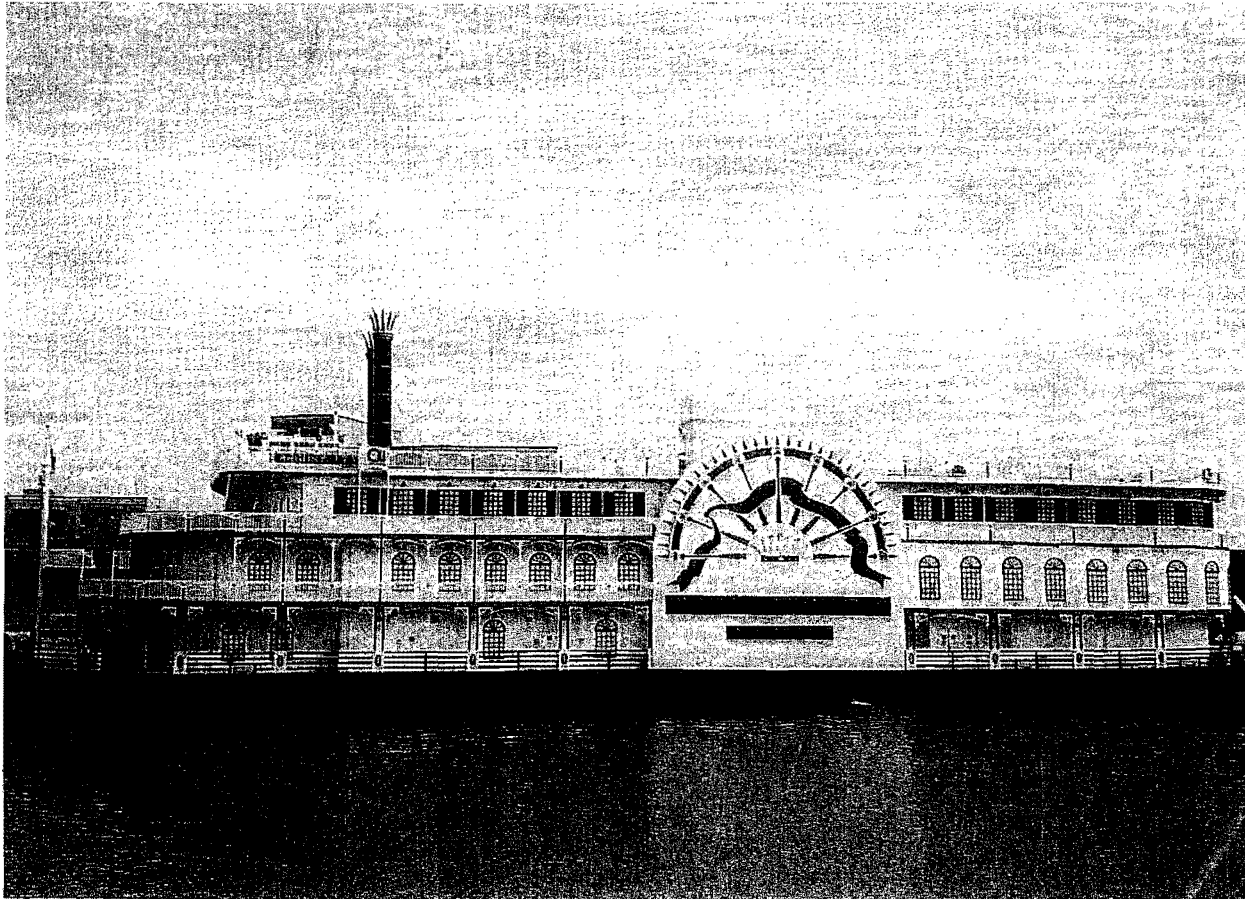
Station Casino Kansas City  
7111 NE Buntline Road  
Kansas City, Missouri 64125  
Tel: (816) 414-1000

Local Government:  
City of Kansas City

## Quick Stats:

Due to the recent date of this casino, complete data is not yet available:

# Missouri Gaming Company "Argosy"



## Quick Facts:

License Date: June 22, 1994  
 Total Gaming Positions: 1,190  
 Gambling Space: 10,000  
 Employees: 1,144

Argosy Riverside Casino  
 777 N.W. Argosy Parkway  
 Riverside, Missouri 64150  
 Tel: (816) 746-3100

Local Government: City of Riverside

## Quick Stats:

Admissions	1,447,669
Admissions Fees	\$6,895,338
Admission Fees	
State & Local Portion	\$3,447,669
Adjusted Gross Receipts	\$87,704,983
Operating Expenses	\$17,540,917
Estimated Project Cost	\$92,597,042
Gaming License	
Local Portion	\$1,754,100
State Portion	\$15,786,897
Table Games	60
Slot Machines	955



# President Riverboat Casino - Missouri, Inc.



## Quick Facts:

License Date: May 27, 1994  
 Total Gaming Positions: 1,393  
 Gambling Space: 58,000  
 Employees: 1,115

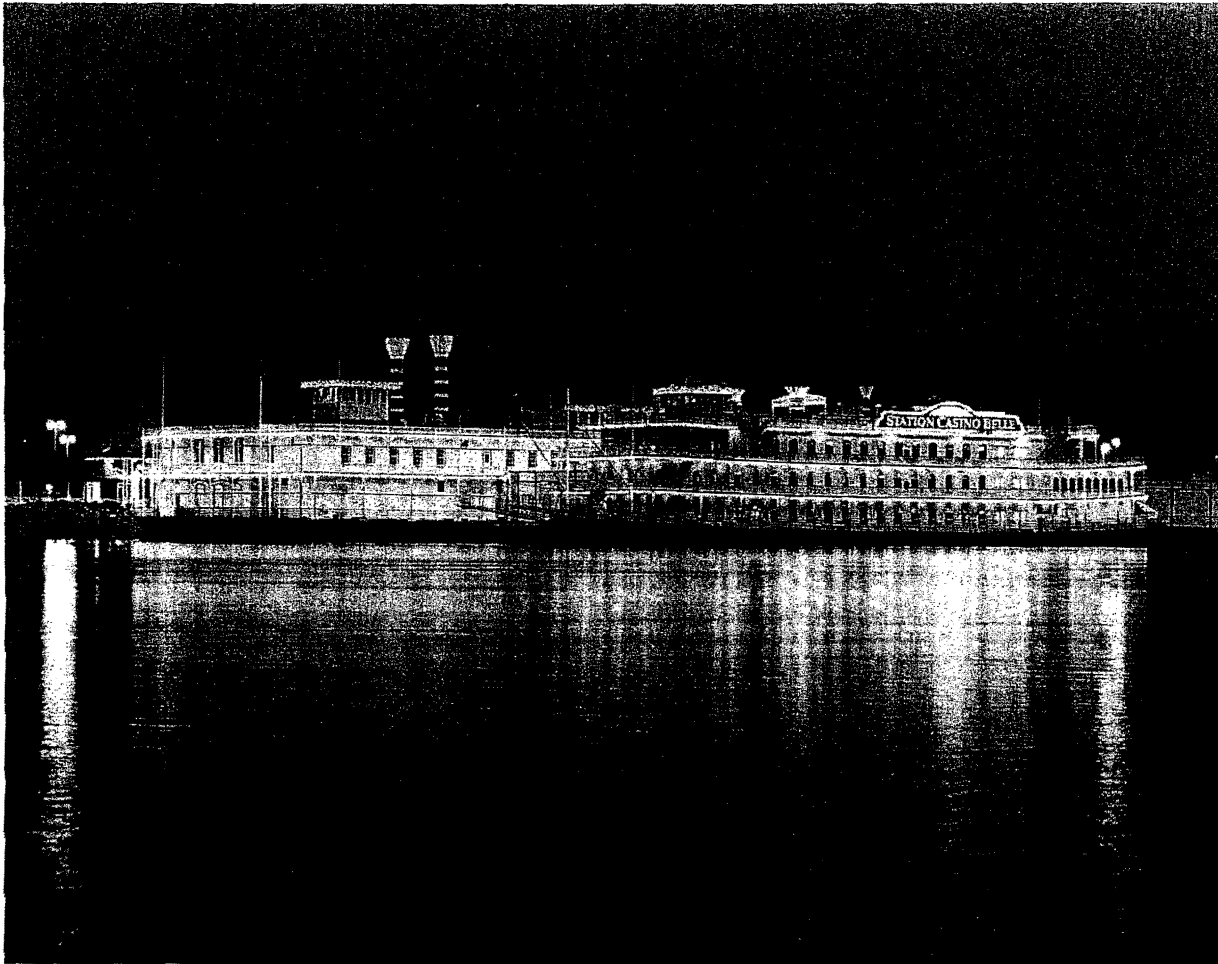
President Riverboat Casino • Missouri, Inc. on the Admiral  
 600 North Leonor K. Sullivan Blvd.  
 St. Louis, Missouri 63102  
 Tel: (314) 8622-3000

Local Government:  
 City of St. Louis

## Quick Stats:

Admissions	3,583,631
Admissions Fees	\$7,167,262
Admission Fees	
State & Local Portion	\$3,583,631
Adjusted Gross Receipts	\$70,036,124
Gaming Tax	\$14,007,225
Estimated Project Cost	\$60,204,248
Gaming Tax	
Local Portion	\$1,400,722
State Portion	\$12,604,502
Table Games	68
Slot Machines	1,137

## St. Charles Riverfront Station



### Quick Facts:

#### License Dates:

Casino St. Charles: May 27, 1994  
Dockside facility: December 28, 1994  
Total Gaming Positions: 2,141  
Gambling Space: 47,000  
Employees: 1,859

#### Casino St. Charles

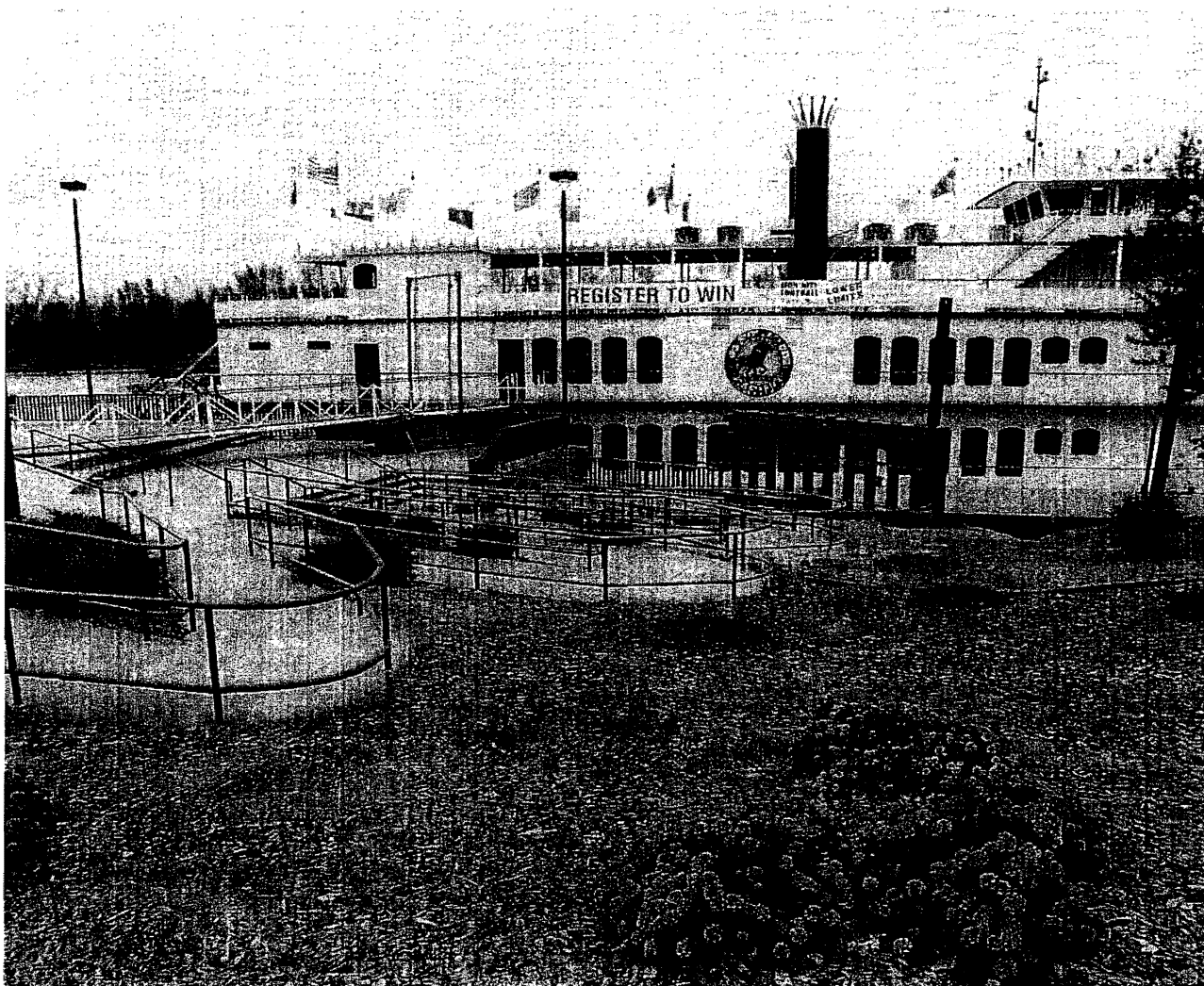
1260 S. Main  
St. Charles, Missouri 63302  
Tel: (314) 940-4300

Local Government:  
City of St. Charles

### Quick Stats:

Admissions	5,792,921
Admissions Fees	\$11,585,842
Admission Fees	
State & Local Portion	\$5,792,921
Adjusted Gross Receipts	\$135,330,444
Gaming Tax	\$27,066,089
Estimated Project Cost	\$153,969,488
Gaming Tax	
Local Portion	\$2,706,609
State Portion	\$24,359,180
Table Games	104
Slot Machines	1,729

# St. Joseph Riverboat Partners



## Quick Facts:

License date: June 22, 1994  
 Total Gaming Positions: 414  
 Gambling Space: 9,620  
 Employees: 364

St. Joseph: 11 tier casino  
 101 Jules Street  
 St. Joseph, Missouri 64501  
 Tel: (816) 232 8634

Local Government:  
 City of St. Joseph

## Quick Stats:

Admissions	8-HI,753
Admissions Fees	1,681,506
Admission Fees	
State & Local Portion	\$1,753
Adjusted Gross Receipts	\$22,186,908
Gaming 'fax	\$4,438
Estimated Project cost	\$22,000,000
Gaming Tax	
Local Portion	\$443,738
State Portion	\$1,993,643
Table Games	18
Slot Machines	349